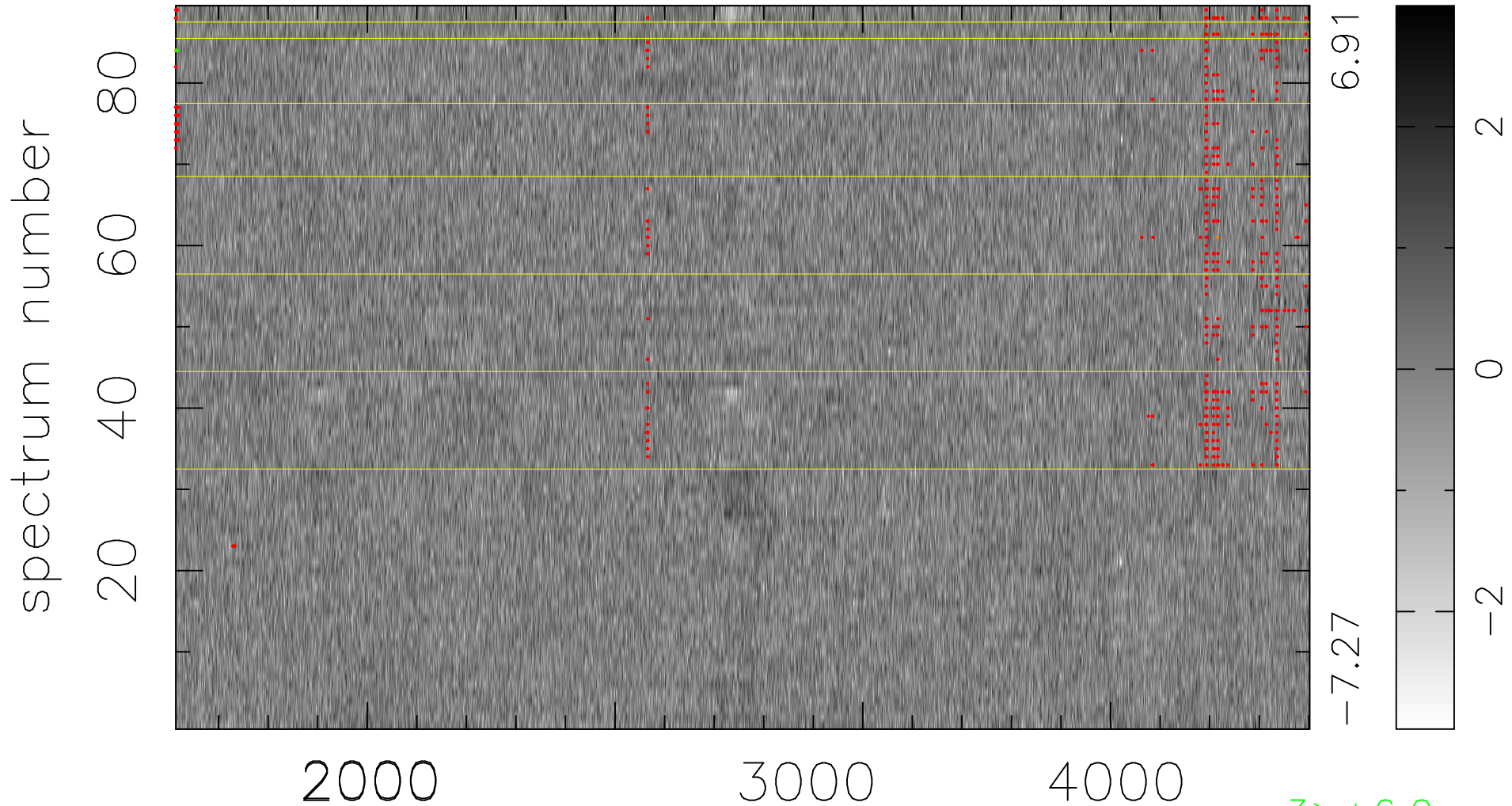


$$\chi(\lambda,t) = (\text{Data} - \text{Model } AC_5) / \sigma \chi$$

$$\chi^2 / (407353 - 4863) = 0.905 \Rightarrow 1.007$$

4577x89



bad:529=0.13%

λ (Å) $z = 1.15463$

3 > +6.0σ

3 < -6.0σ