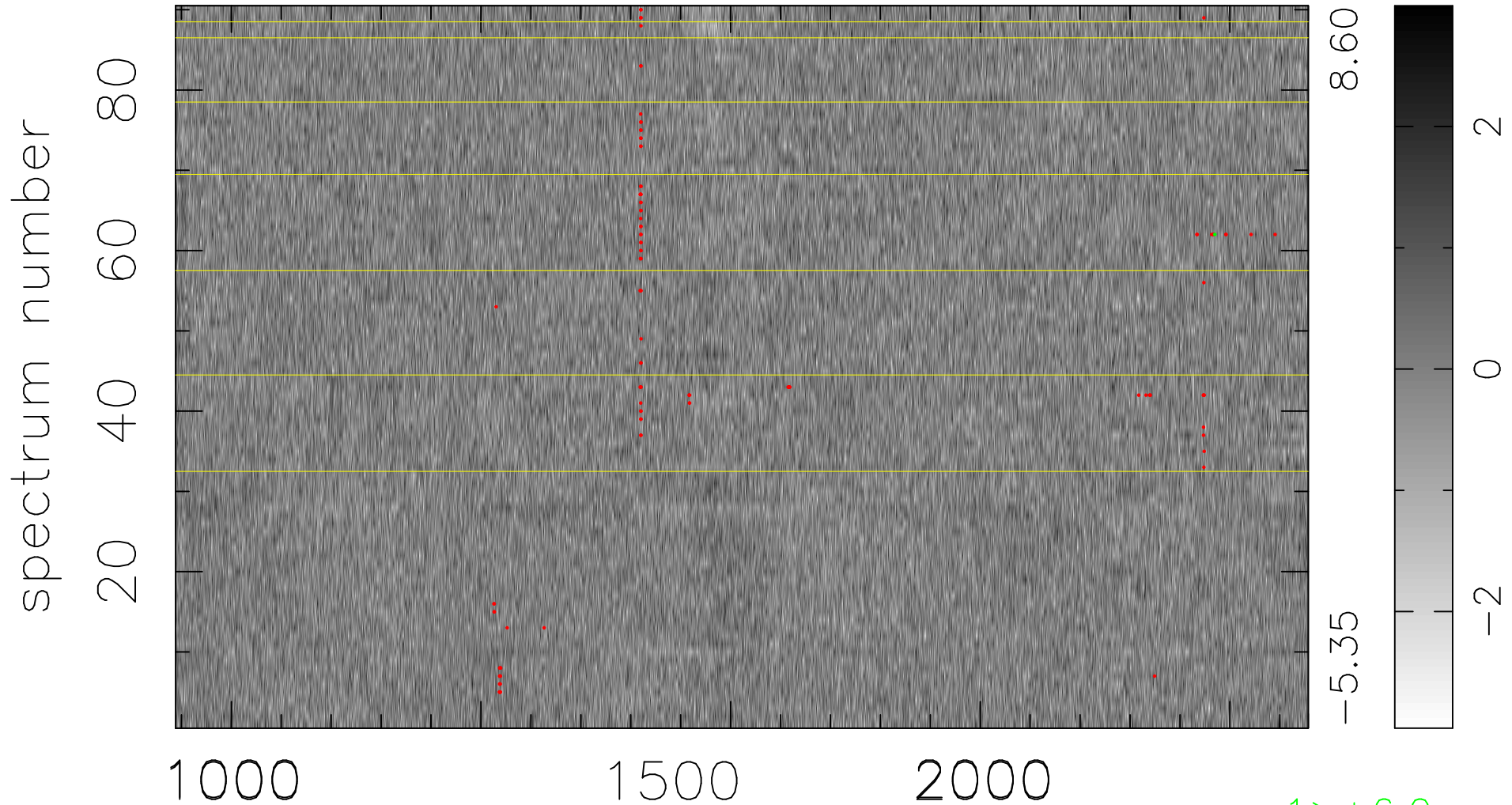


$$\chi(\lambda, t) = ( \text{Data} - \text{Model } \text{AC}_5\text{B}_6\text{F} ) / \sigma \chi$$

$$\chi^2 / (408420 - 5350) = 0.919 \Rightarrow 1.006$$

4538x90



bad:117=0.029%  $\lambda$  (Å)  $z = 2.82393$

1 > +6.0 $\sigma$