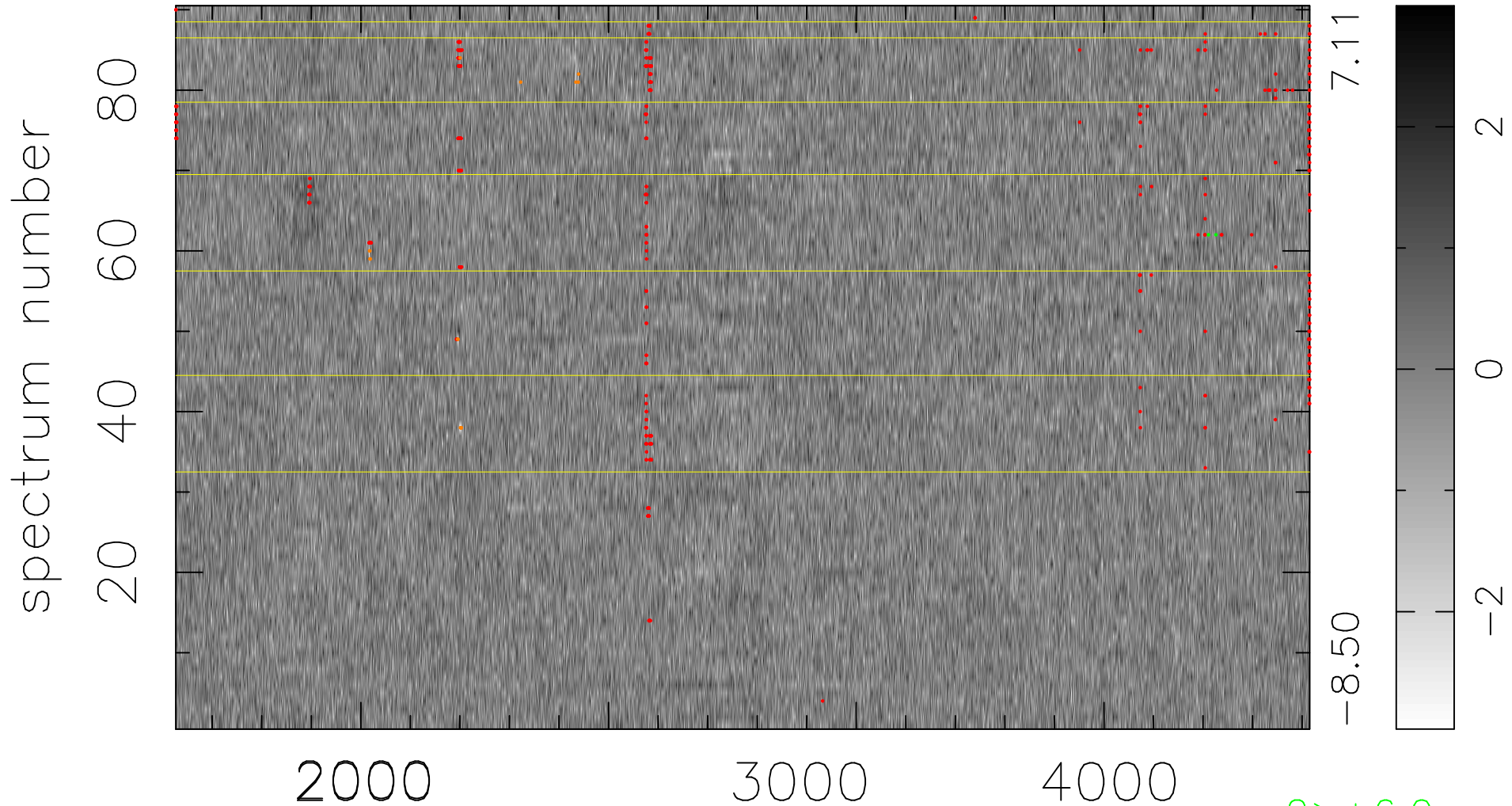


$$\chi(\lambda, t) = ( \text{Data} - \text{Model AC}_5\text{F} ) / \sigma \chi$$

$$\chi^2 / (412020 - 4958) = 0.939 \Rightarrow 1.007$$

4578x90



bad:487=0.12%

$\lambda$  (Å)  $z = 1.14430$

2 > +6.0σ  
16 < -6.0σ