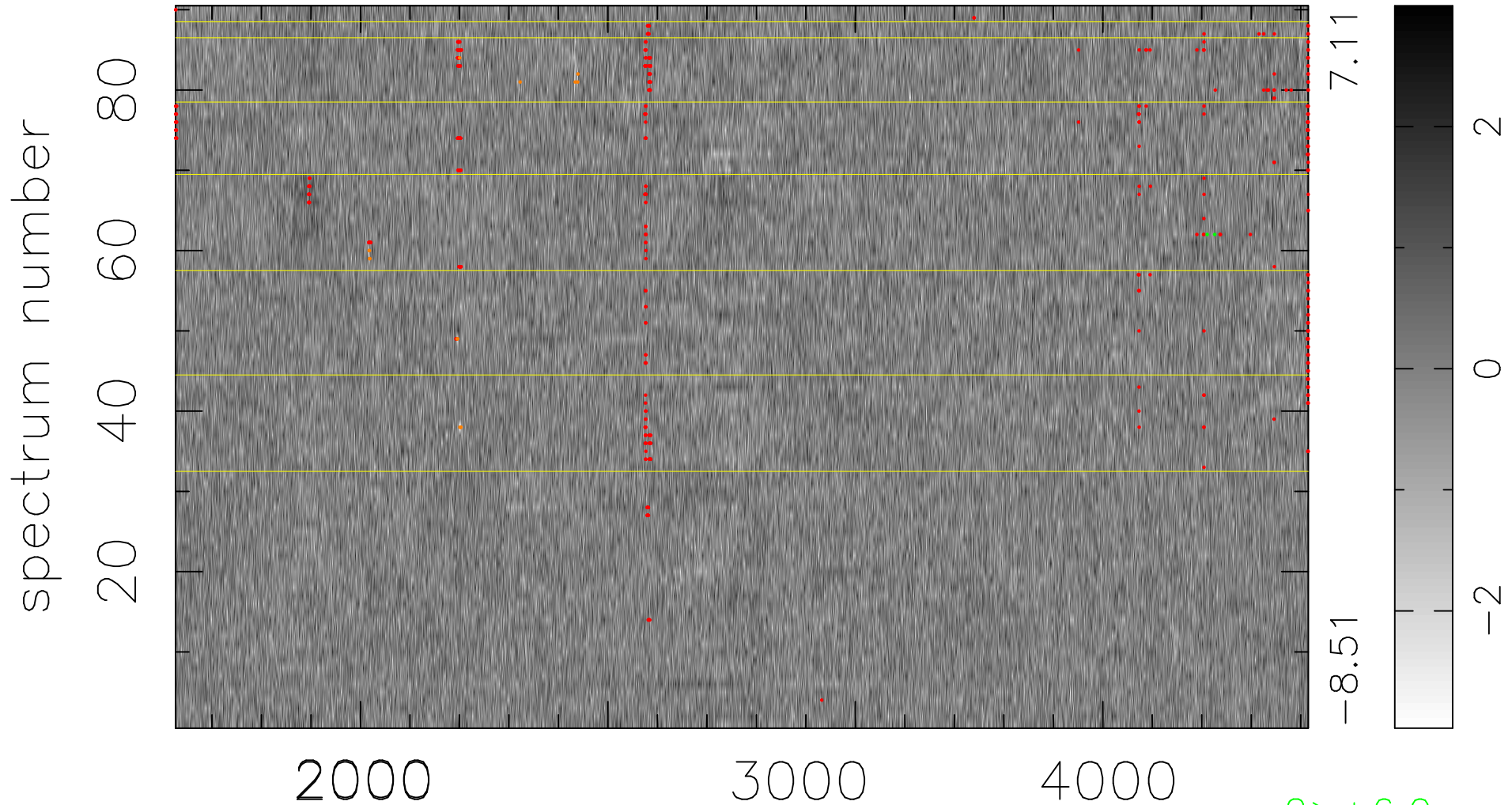


$$\chi(\lambda,t) = ( \text{Data} - \text{Model } AC_5 ) / \sigma \chi$$

$$\chi^2 / (412020 - 4868) = 0.939 \Rightarrow 1.007$$

4578x90



bad:487=0.12%

$\lambda$  (Å)  $z = 1.14430$

2 > +6.0σ  
16 < -6.0σ