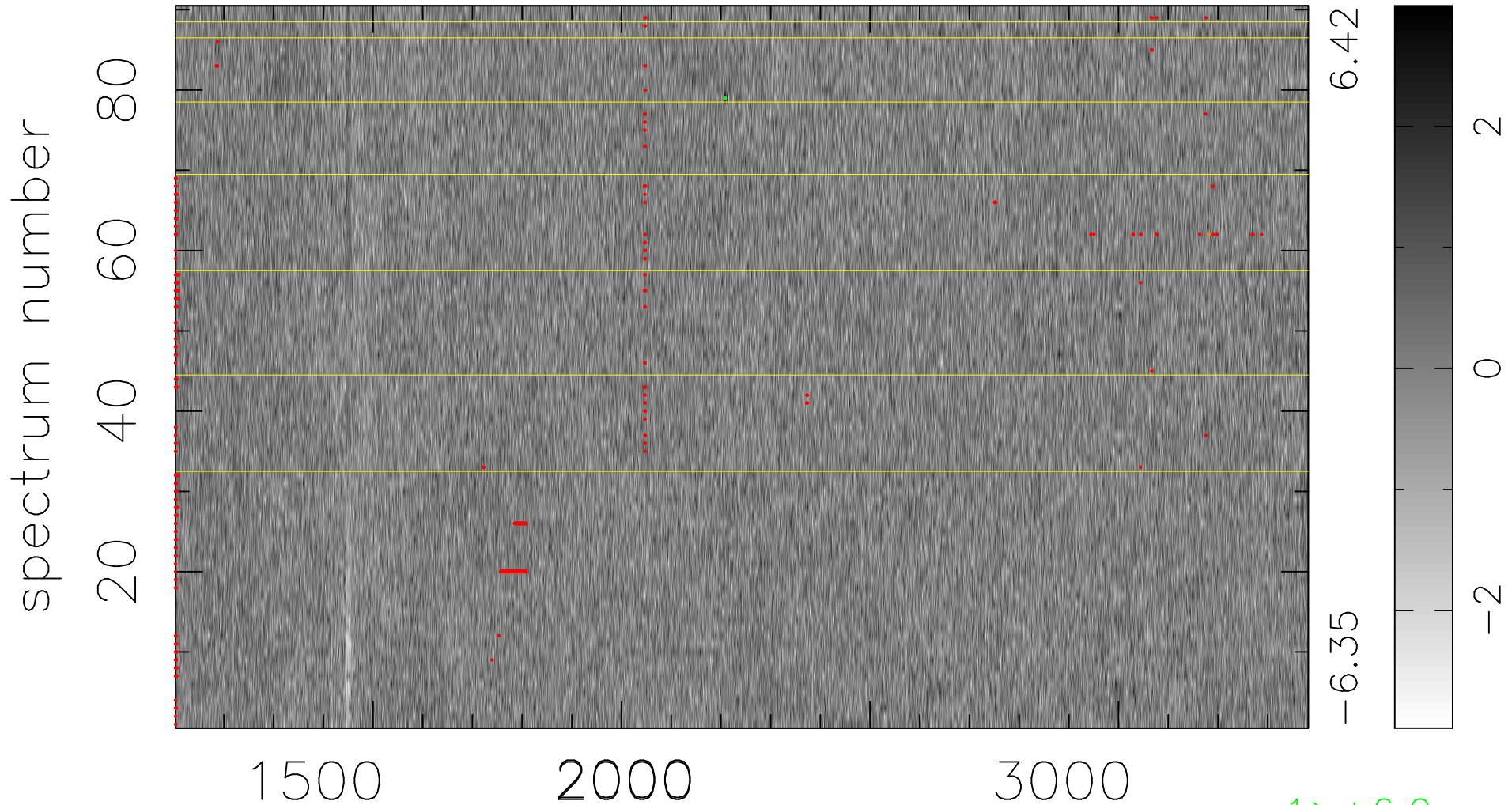


$$\chi(\lambda, t) = (\text{Data} - \text{Model } \text{AC}_5\text{B}_5\text{F}) / \sigma \chi$$

$$\chi^2 / (410310 - 5214) = 0.925 \Rightarrow 1.008$$

4559x90



bad:488=0.12%

λ (Å) $z = 1.73562$

1 > +6.0σ

1 < -6.0σ