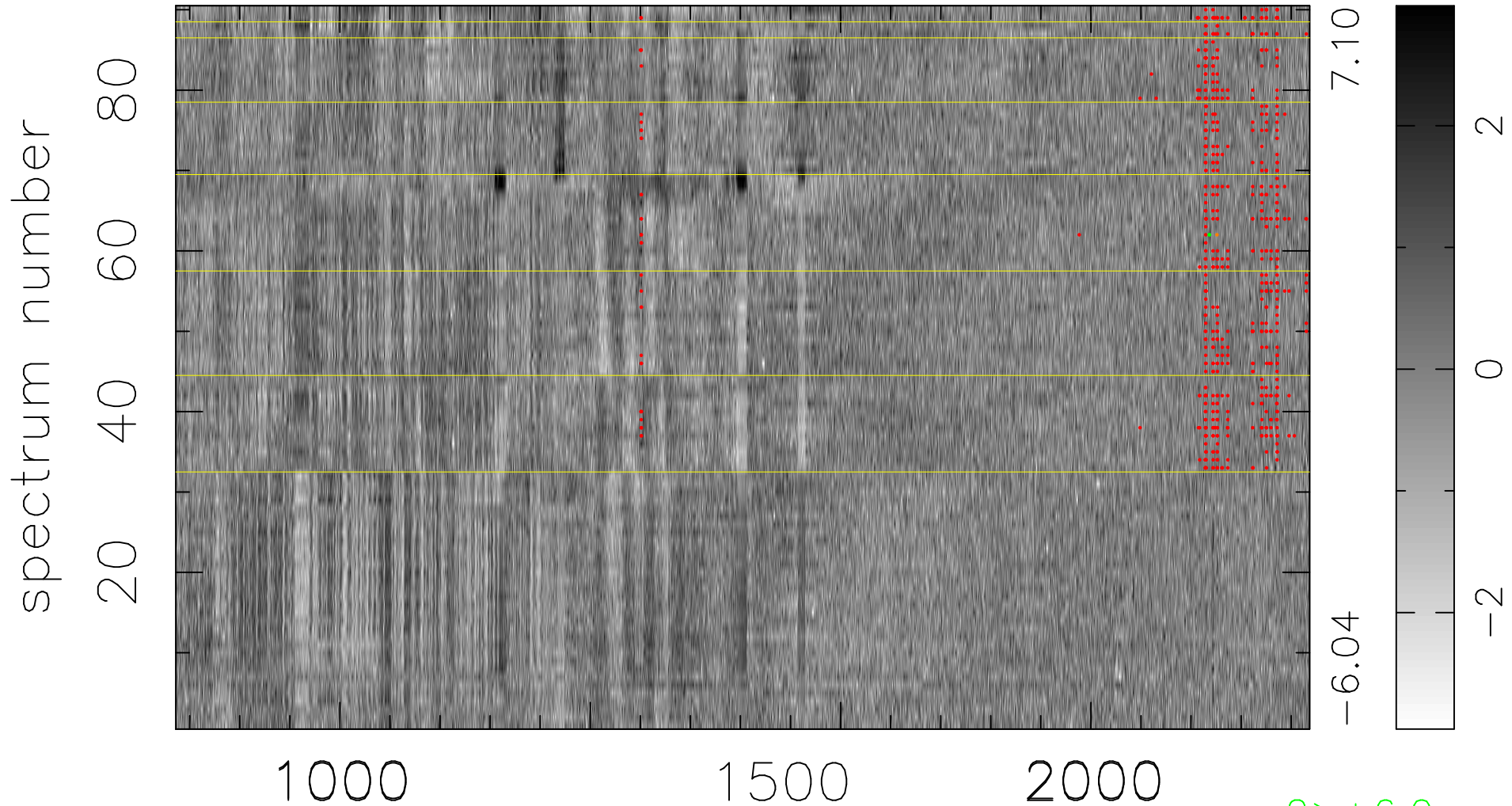


$$\chi(\lambda, t) = (\text{Data} - \text{Model AC}_5\text{F}) / \sigma \chi$$

$$\chi^2 / (407700 - 5205) = 1.405 \Rightarrow 1.003$$

4530x90



bad:577=0.14%

λ (Å) $z = 3.22802$

2 > +6.0σ

1 < -6.0σ