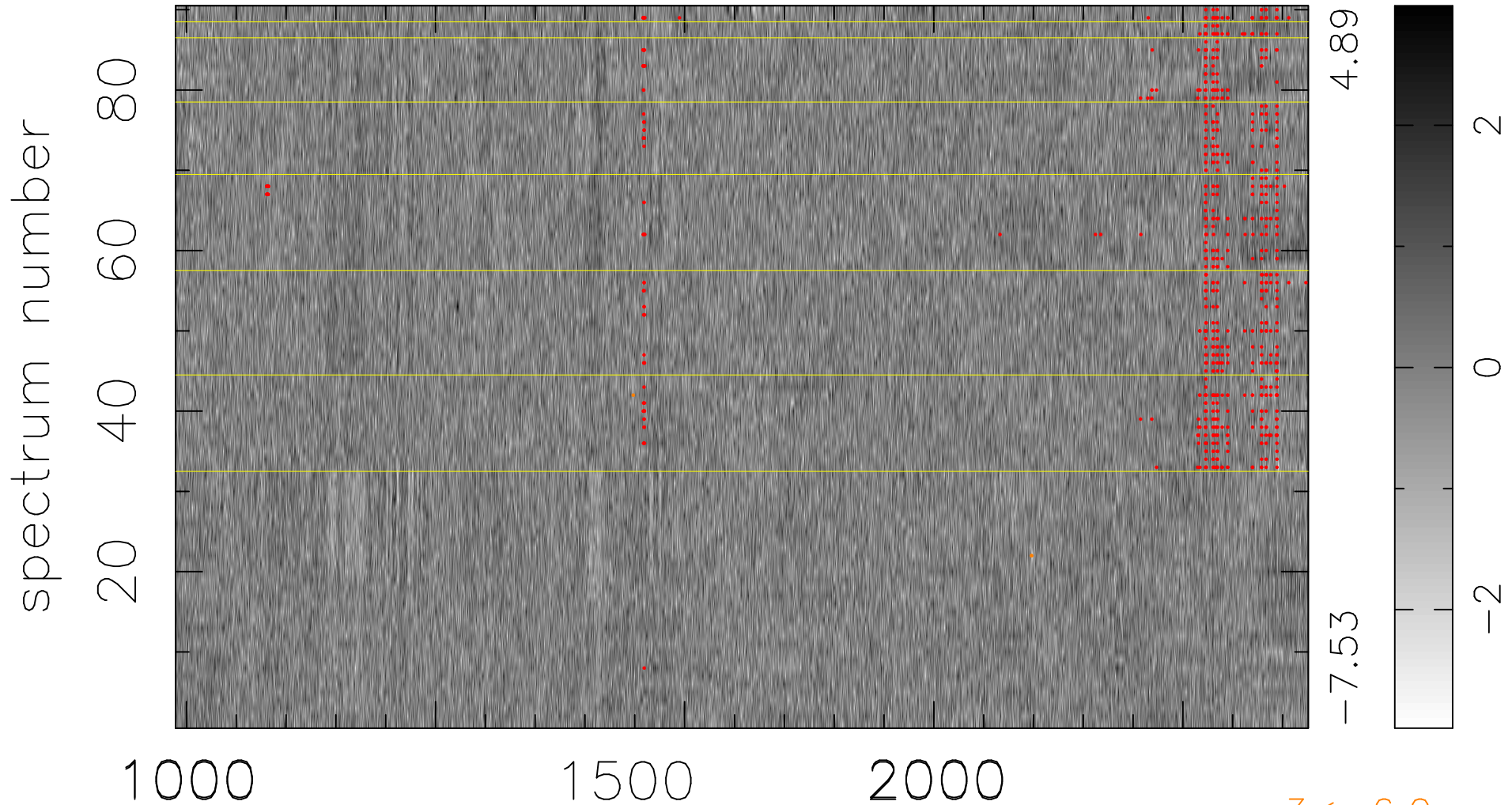


$$\chi(\lambda, t) = ( \text{Data} - \text{Model } \text{AC}_5\text{B}_7\text{F} ) / \sigma \chi$$

$$\chi^2 / (409230 - 5443) = 1.009 \Rightarrow 1.008$$

4547x90



bad:682=0.17%

$\lambda$  (Å)  $z = 2.65439$

$3 < -6.0\sigma$