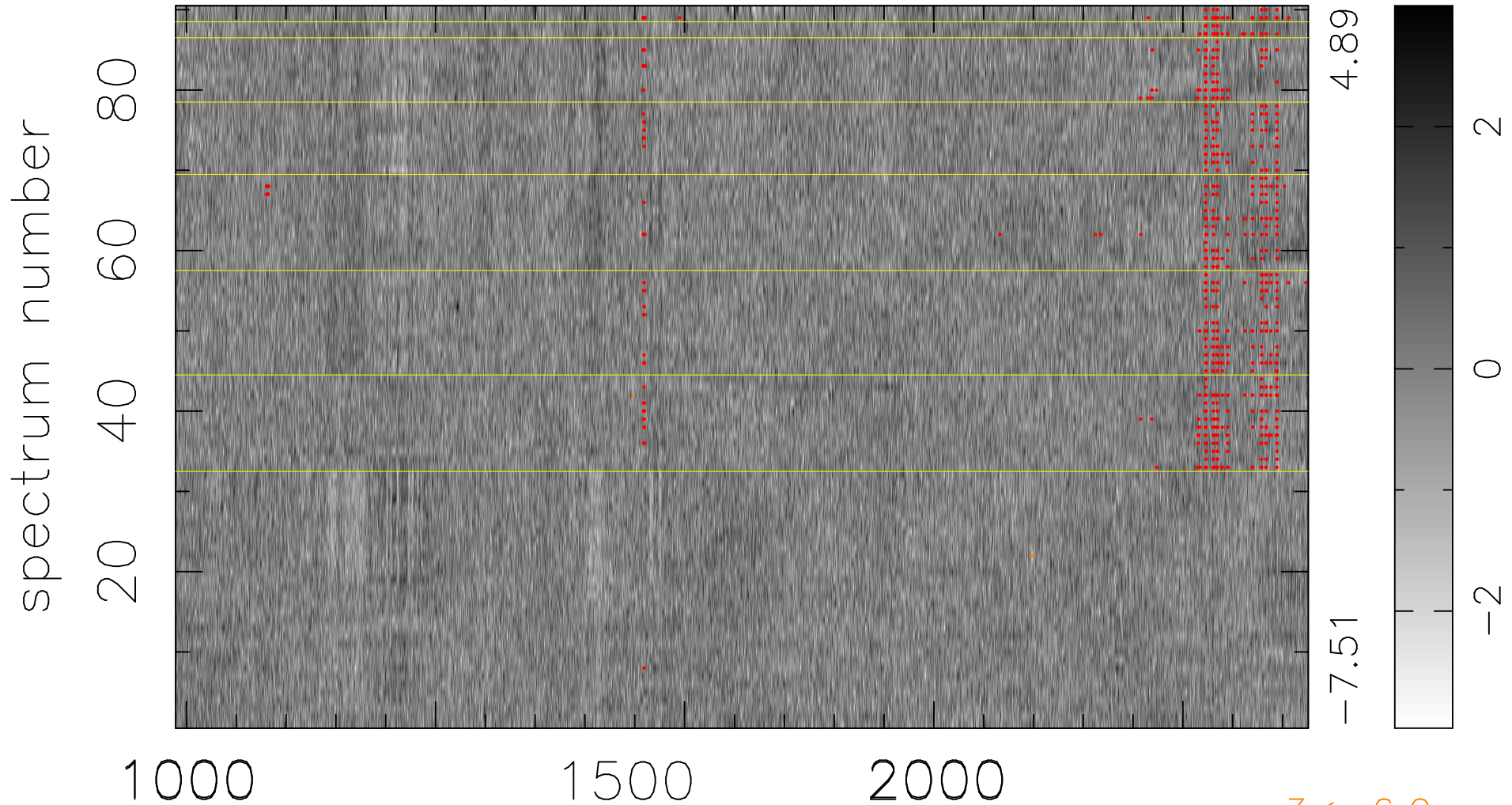


$$\chi(\lambda, t) = (\text{Data} - \text{Model AC}_5\text{F}) / \sigma \chi$$

$$\chi^2 / (409230 - 5302) = 1.018 \Rightarrow 1.007$$

4547x90



$3 < -6.0\sigma$

bad:682=0.17%

λ (Å) $z = 2.65439$