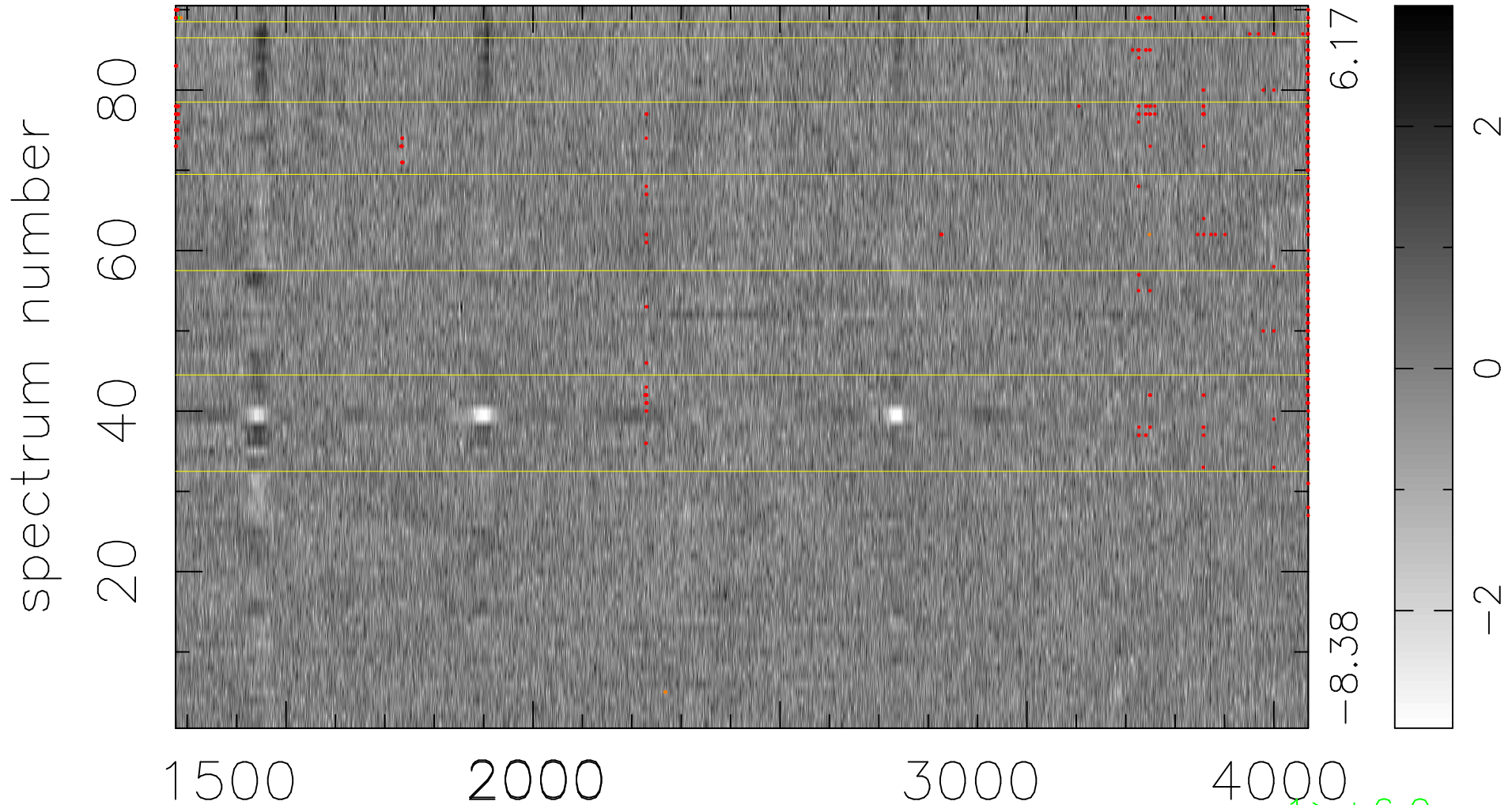


$$\chi(\lambda, t) = ( \text{Data} - \text{Model AC}_5\text{F} ) / \sigma \chi$$

$$\chi^2 / (412830 - 5068) = 0.946 \Rightarrow 1.007$$

4587x90



bad:440=0.11%

$\lambda$  (Å)  $z = 1.51541$

1 > +6.0σ

5 < -6.0σ