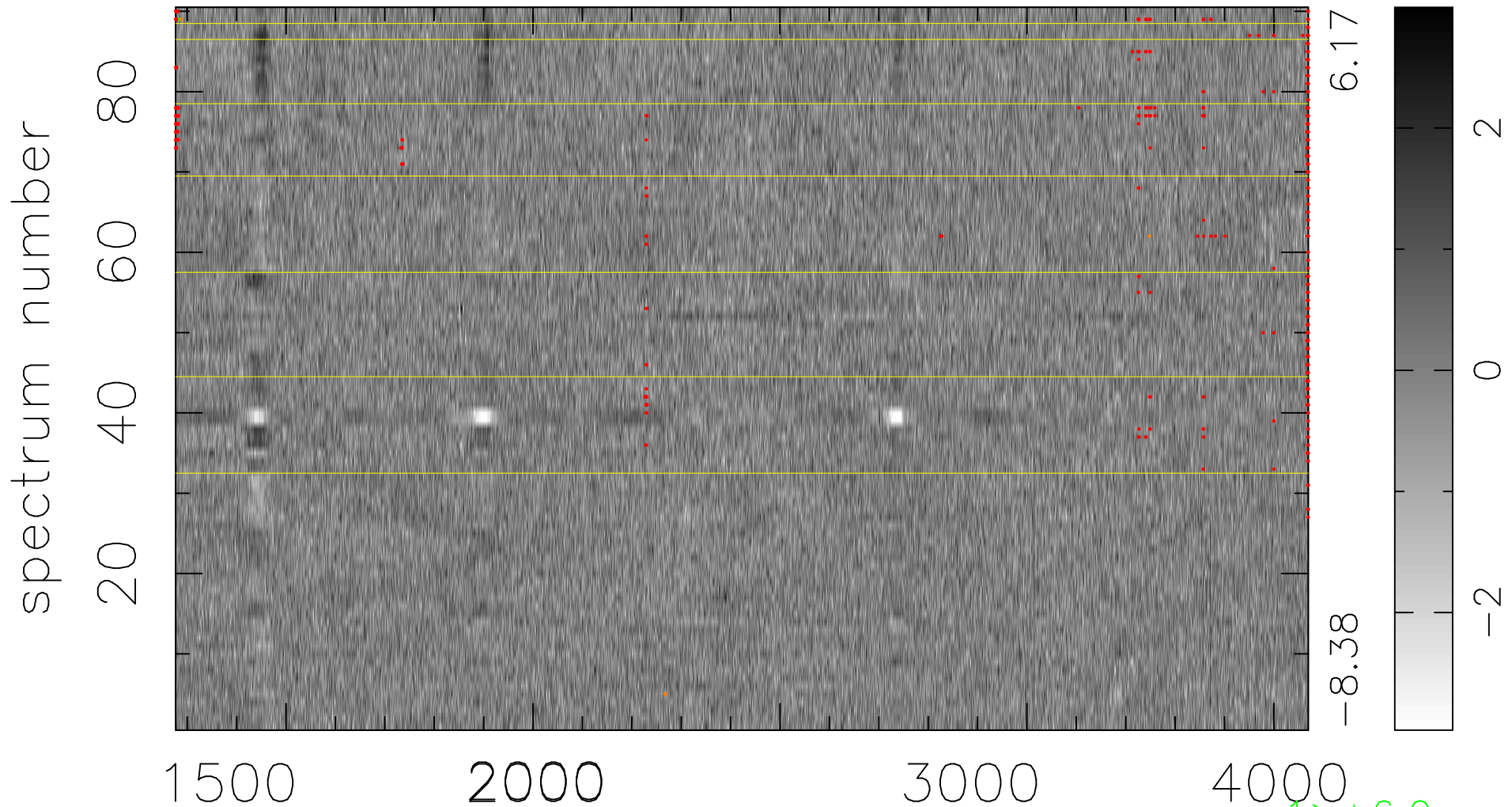


$$\chi(\lambda,t) = (\text{Data} - \text{Model } AC_5) / \sigma \chi$$

$$\chi^2 / (412830 - 4978) = 0.947 \Rightarrow 1.007$$

4587x90



bad:440=0.11%

λ (Å) $z = 1.51541$

1 > +6.0σ

5 < -6.0σ