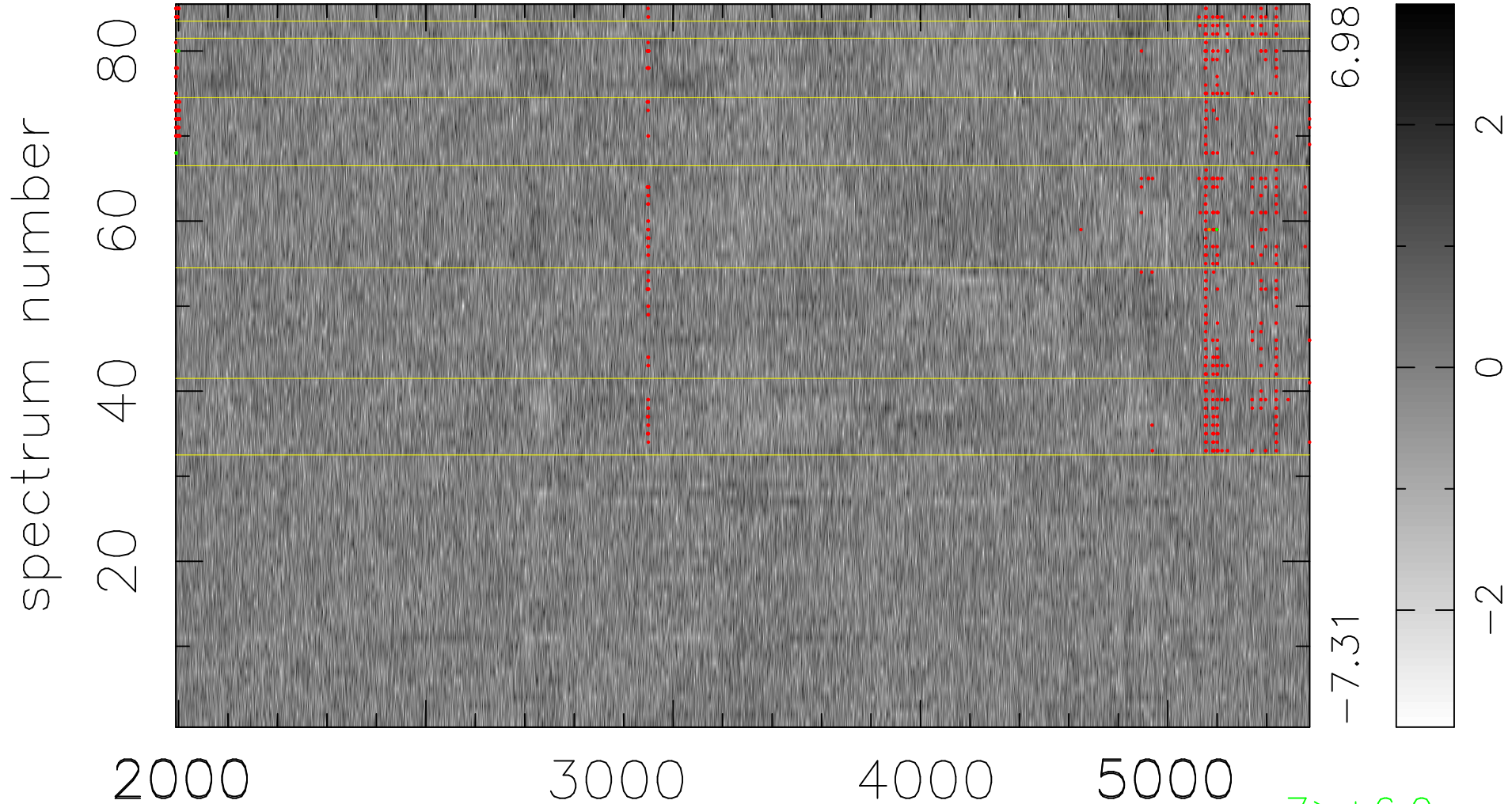


$$\chi(\lambda,t) = ( \text{Data} - \text{Model } AC_5 ) / \sigma \chi$$

$$\chi^2 / (389810 - 4855) = 0.923 \Rightarrow 1.006$$

4586x85



bad:570=0.15%

$\lambda$  (Å)  $z = 0.80561$

7 > +6.0σ

4 < -6.0σ