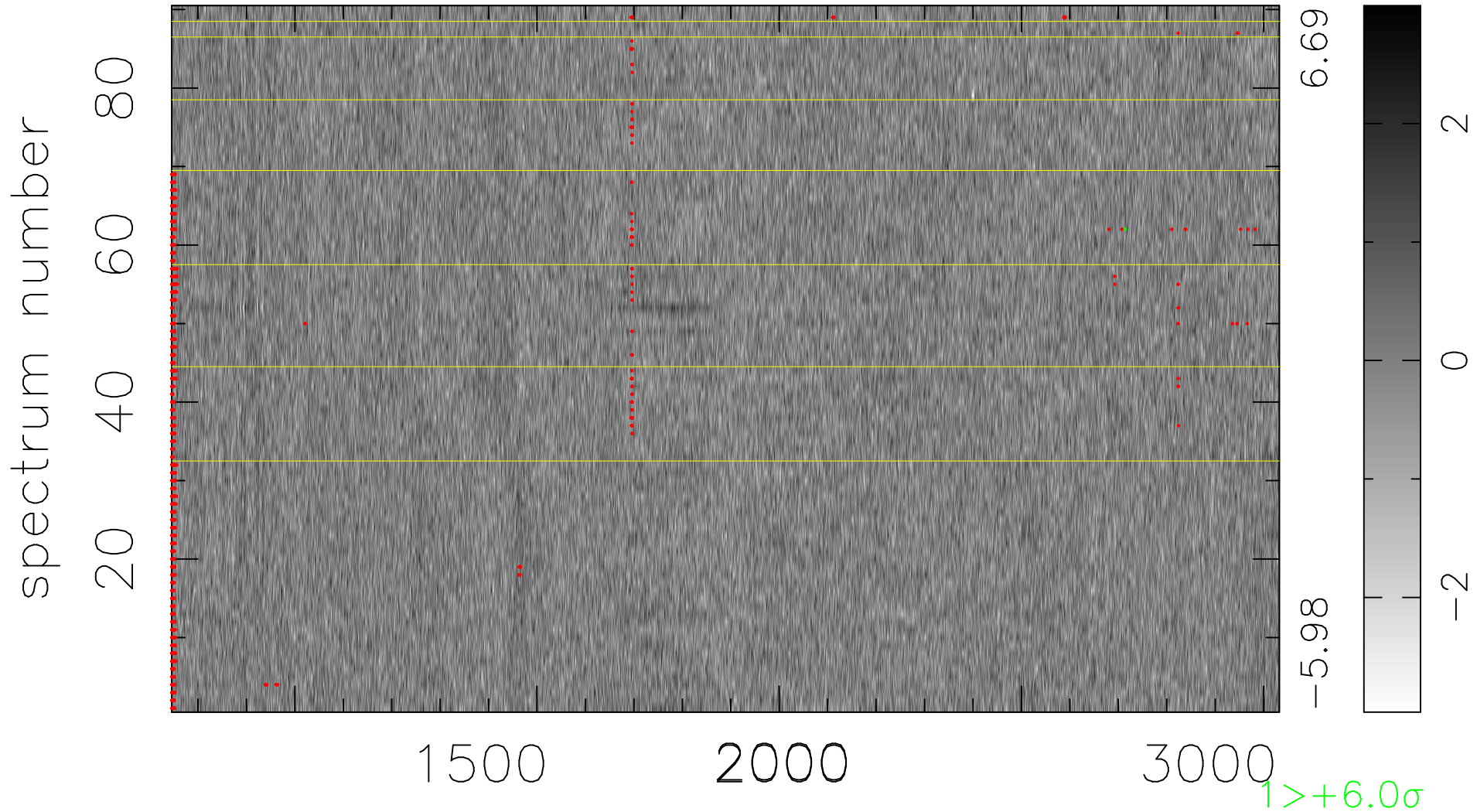


$$\chi(\lambda, t) = (\text{Data} - \text{Model } \text{AC}_5\text{B}_7\text{F}) / \sigma \chi$$

$$\chi^2 / (411660 - 5474) = 0.901 \Rightarrow 1.008$$

4574 × 90



bad:1105=0.27% λ (Å) $z = 2.21610$

$1 > +6.0\sigma$