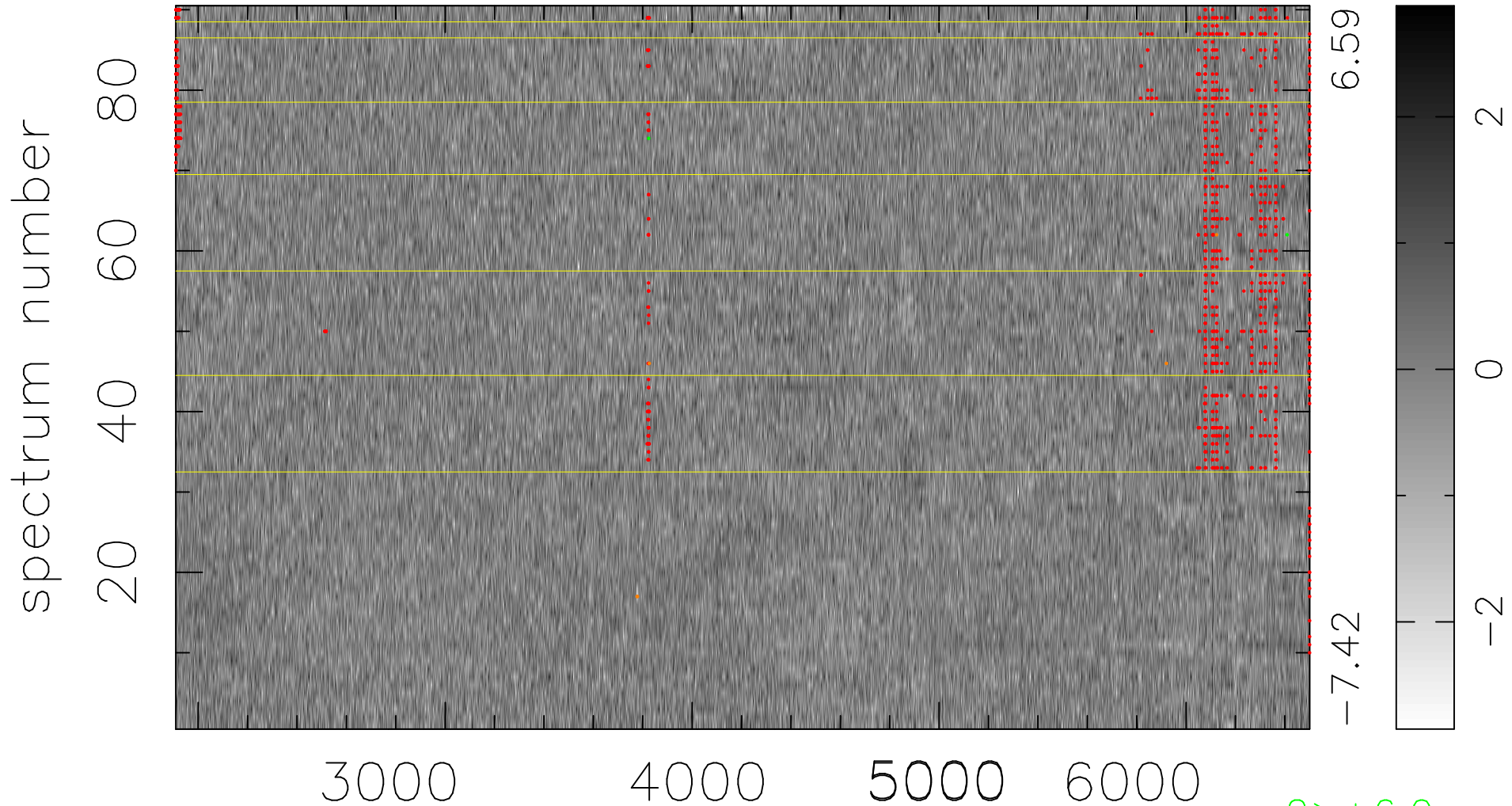


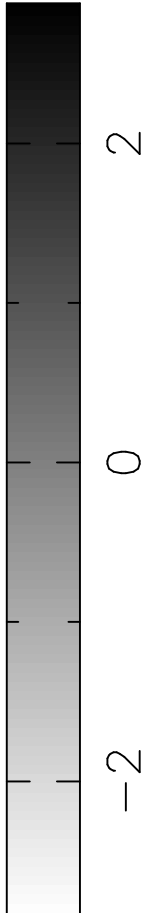
$$\chi(\lambda, t) = ( \text{Data} - \text{Model AC}_5\text{F} ) / \sigma \chi$$

$$\chi^2 / (413280 - 5076) = 1.026 \Rightarrow 0.967$$

4592x90



6.59  
-7.42



2 > +6.0σ

5 < -6.0σ

bad:1005=0.24%    λ (Å)    z = 0.45940