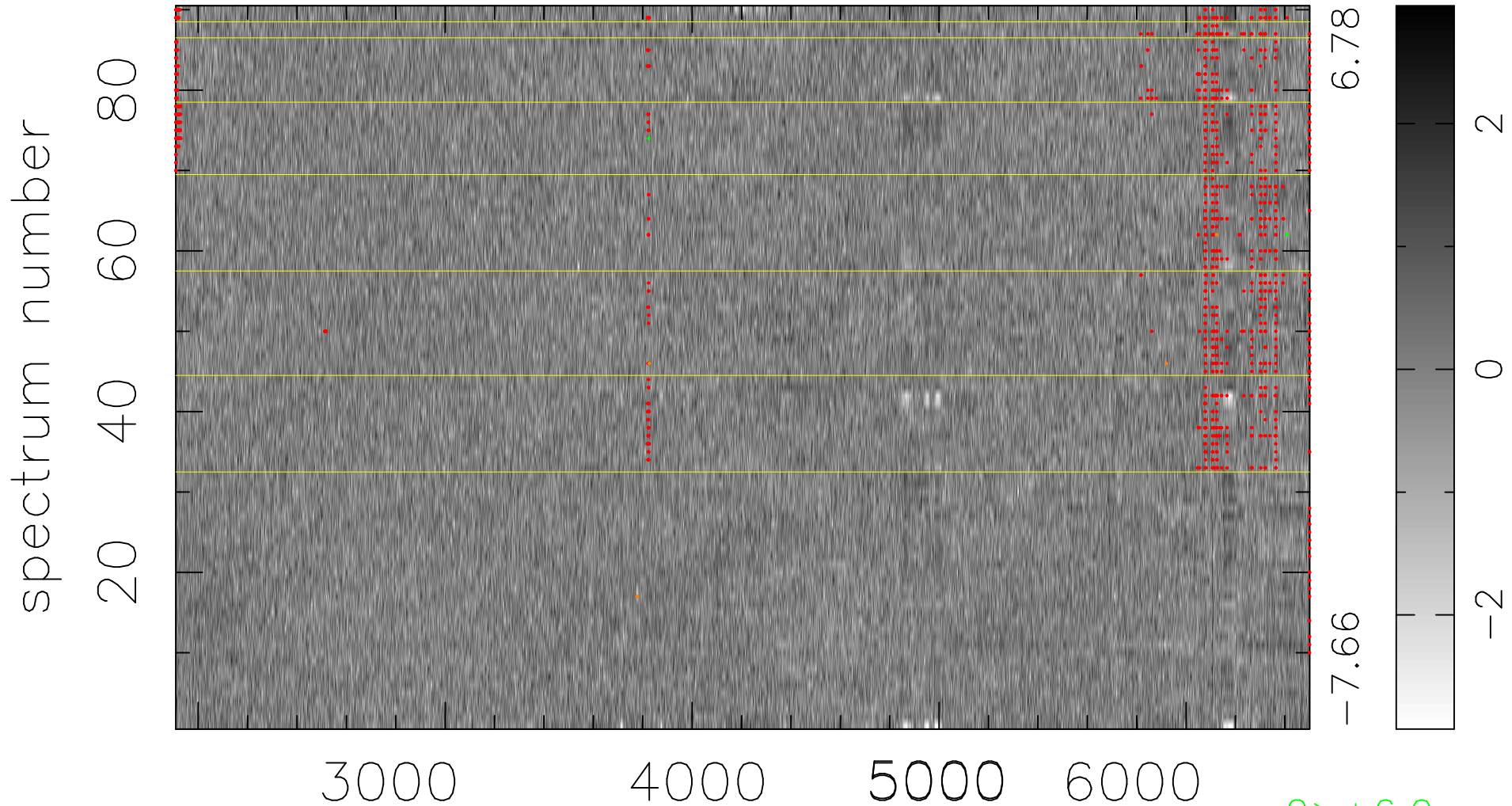


$$\chi(\lambda,t) = (\text{Data} - \text{Model } AC_5) / \sigma \chi$$

$$\chi^2 / (413280 - 4986) = 1.097 \Rightarrow 0.994$$

4592x90



bad:1005=0.24% λ (Å) $z = 0.45940$

2 > +6.0σ
5 < -6.0σ