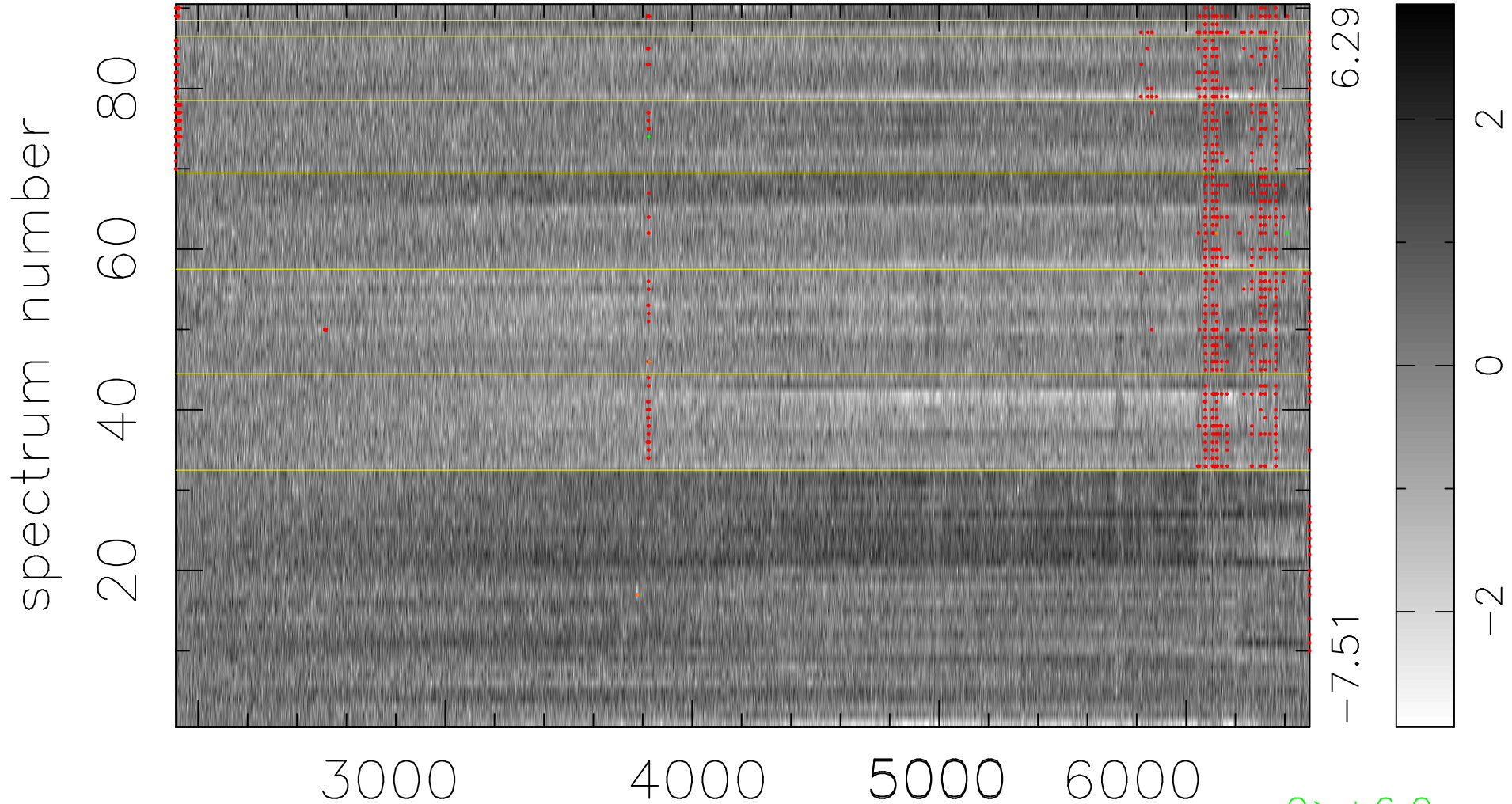


$$\chi(\lambda, t) = (\text{Data} - \text{Model A}) / \sigma \chi$$

$$\chi^2 / (413280 - 4986) = 1.450 \Rightarrow 0.991$$

4592x90



bad:1005=0.24% λ (Å) $z = 0.45940$

2 > +6.0σ

4 < -6.0σ