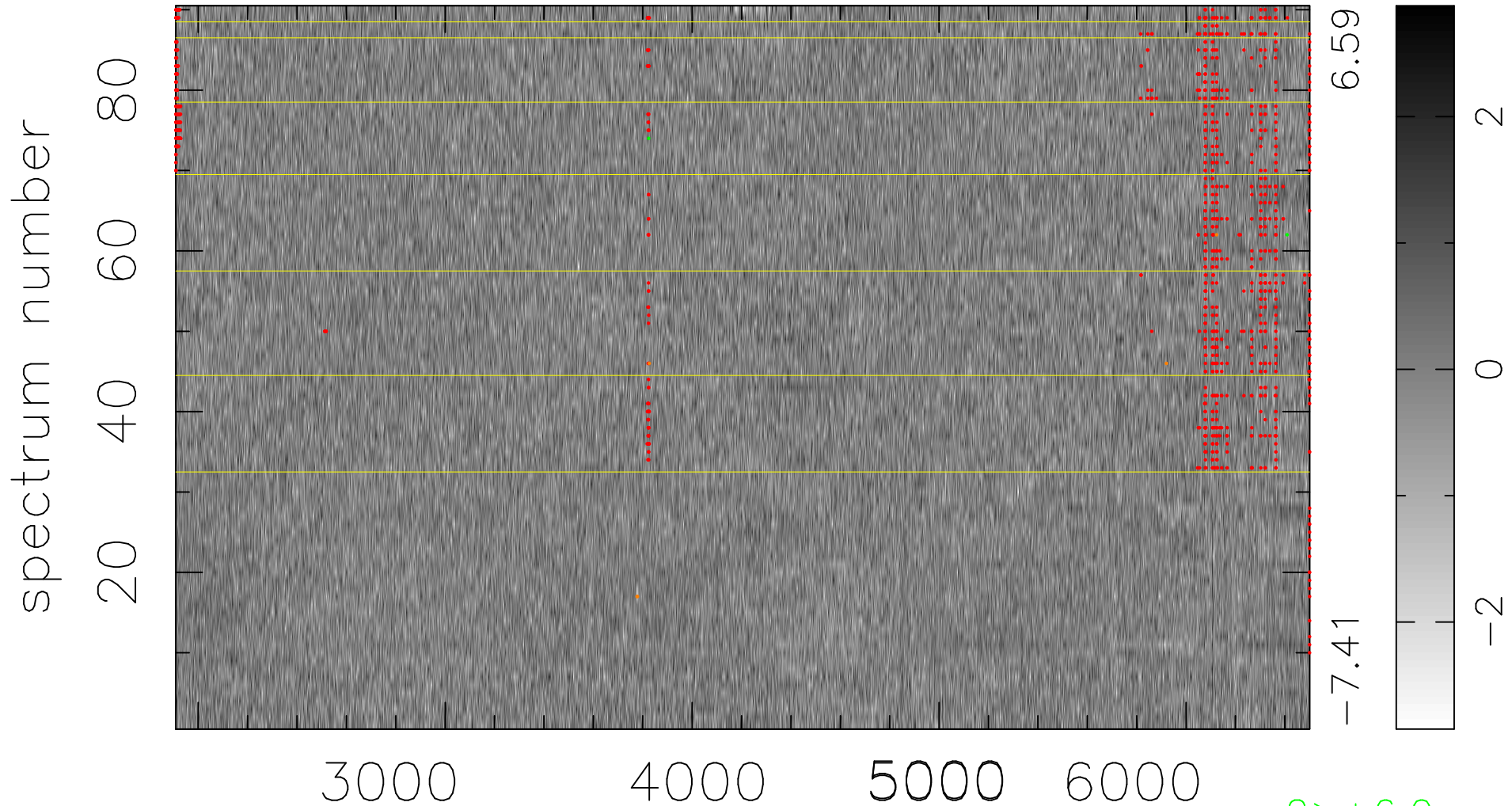


$$\chi(\lambda, t) = (\text{Data} - \text{Model } \text{AC}_5\text{B}_4\text{F}) / \sigma \chi$$

$$\chi^2 / (413280 - 5234) = 1.024 \Rightarrow 0.967$$

4592x90



2 > +6.0σ

5 < -6.0σ

bad: 1005 = 0.24% λ (Å) z = 0.45940