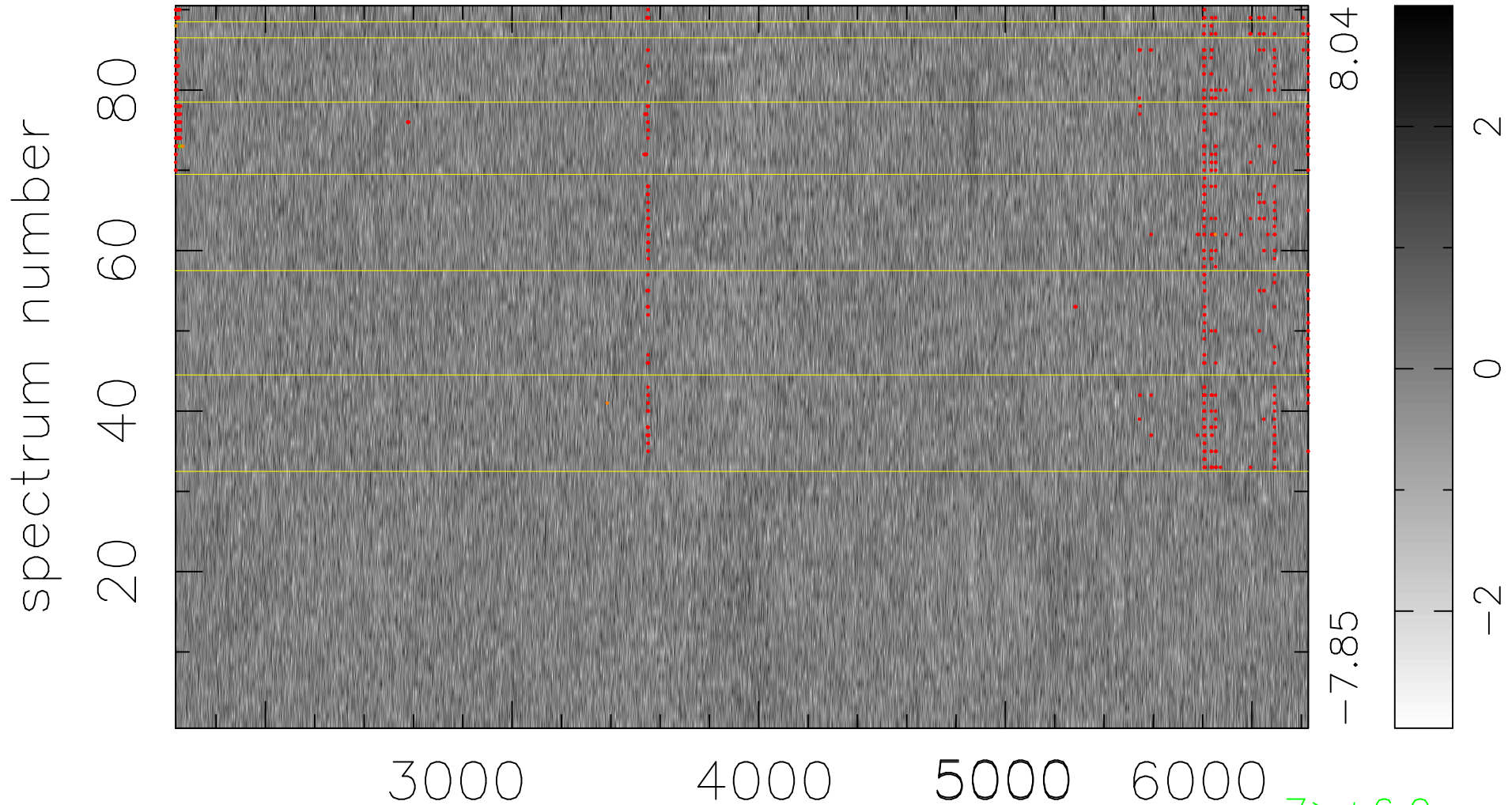


$$\chi(\lambda, t) = ( \text{Data} - \text{Model AC}_5\text{F} ) / \sigma \chi$$

$$\chi^2 / (413370 - 5078) = 0.937 \Rightarrow 1.007$$

4593x90



8.04  
-7.85

2  
0  
-2

7 > +6.0σ  
11 < -6.0σ

bad:681=0.16%    λ (Å)    z = 0.55388