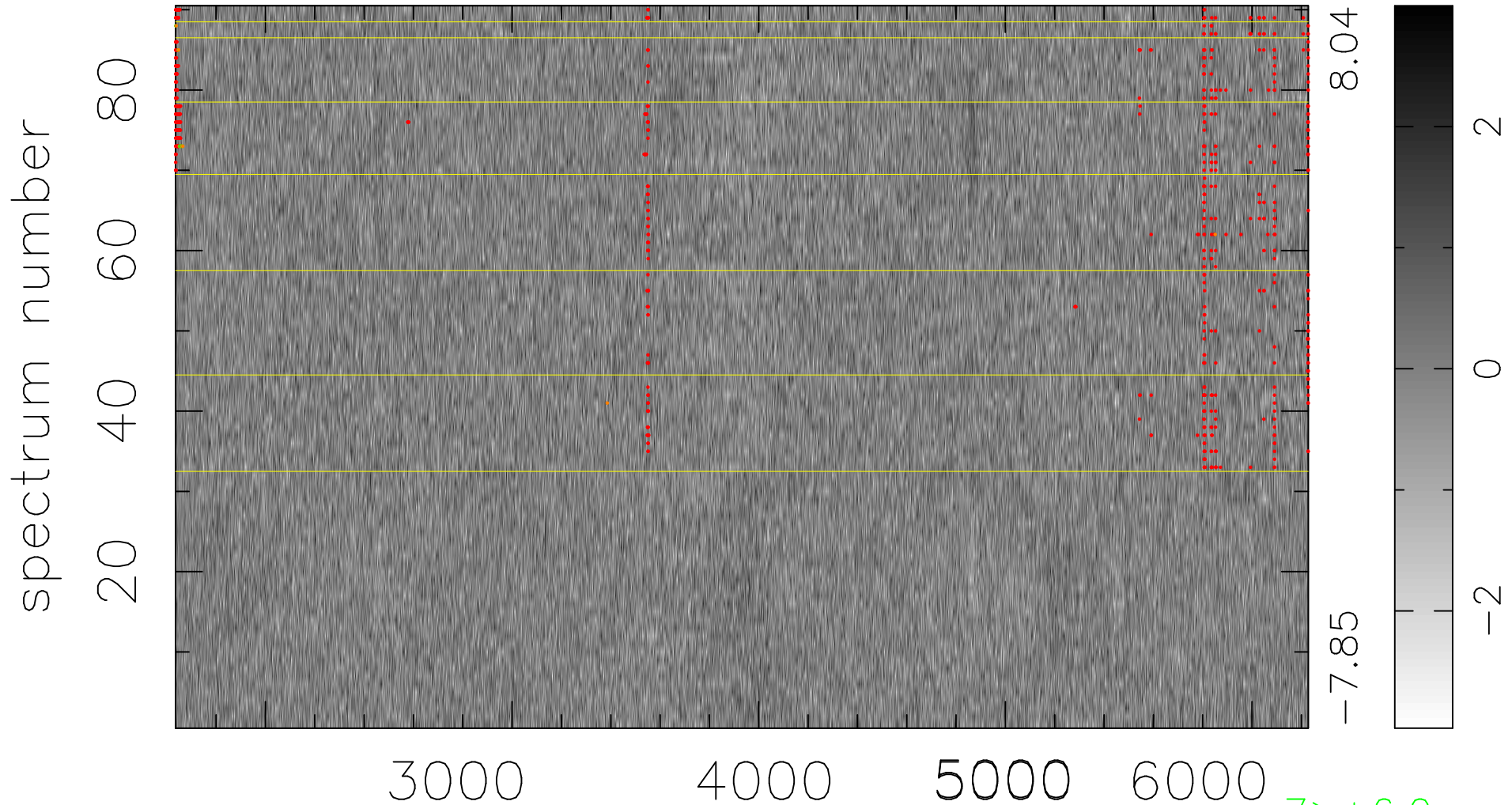


$$\chi(\lambda,t) = ( \text{Data} - \text{Model } AC_5 ) / \sigma \chi$$

$$\chi^2 / (413370 - 4988) = 0.937 \Rightarrow 1.007$$

4593x90



8.04

-7.85

2

0

-2

7 > +6.0σ

11 < -6.0σ

bad:681=0.16%

λ (Å) z = 0.55388