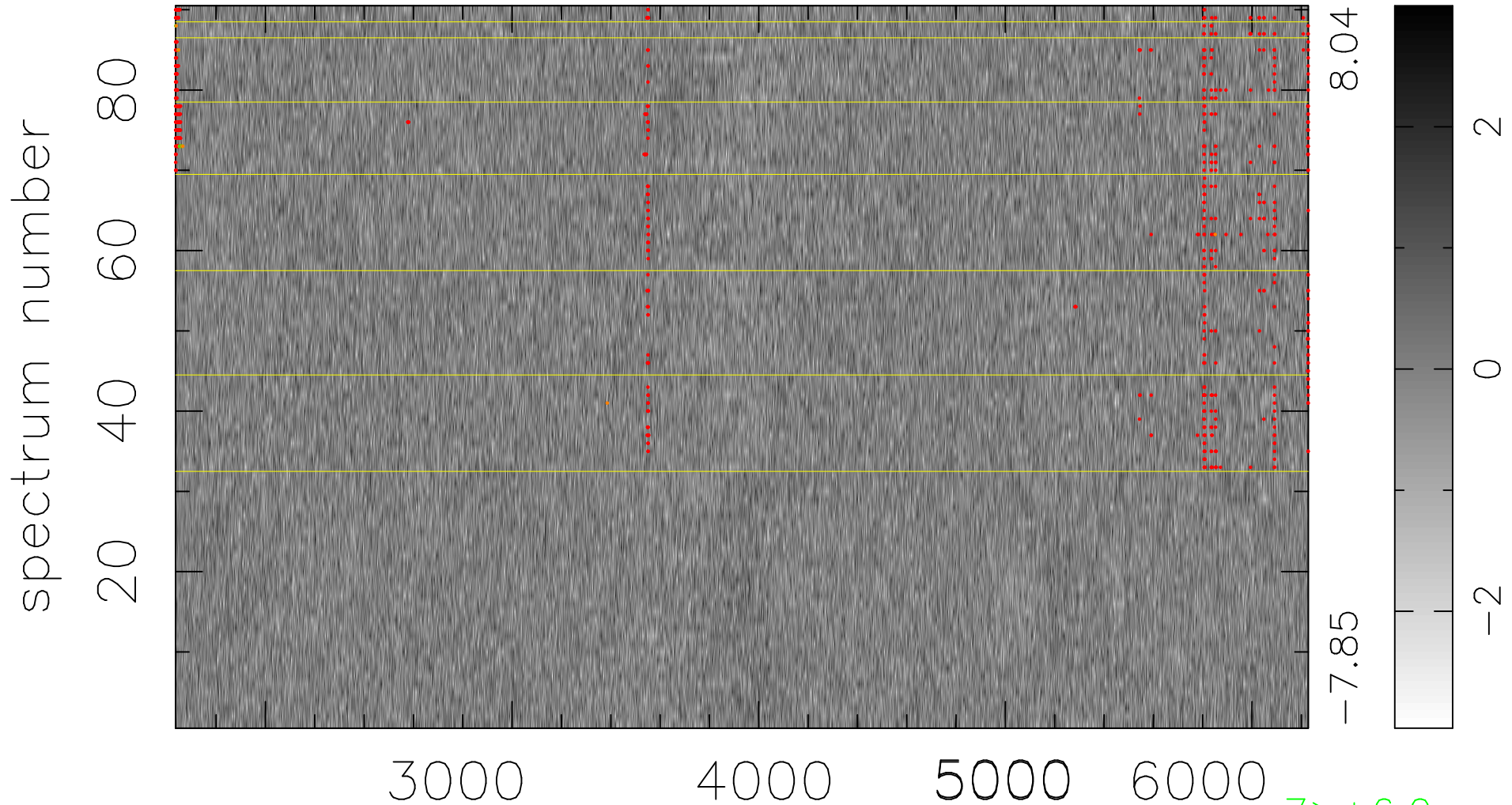


$$\chi(\lambda, t) = ( \text{Data} - \text{Model } \text{AC}_5\text{B}_4\text{F} ) / \sigma \chi$$

$$\chi^2 / (413370 - 5211) = 0.934 \Rightarrow 1.007$$

4593x90



7 > +6.0σ

11 < -6.0σ

bad:681=0.16%

λ (Å) z = 0.55388