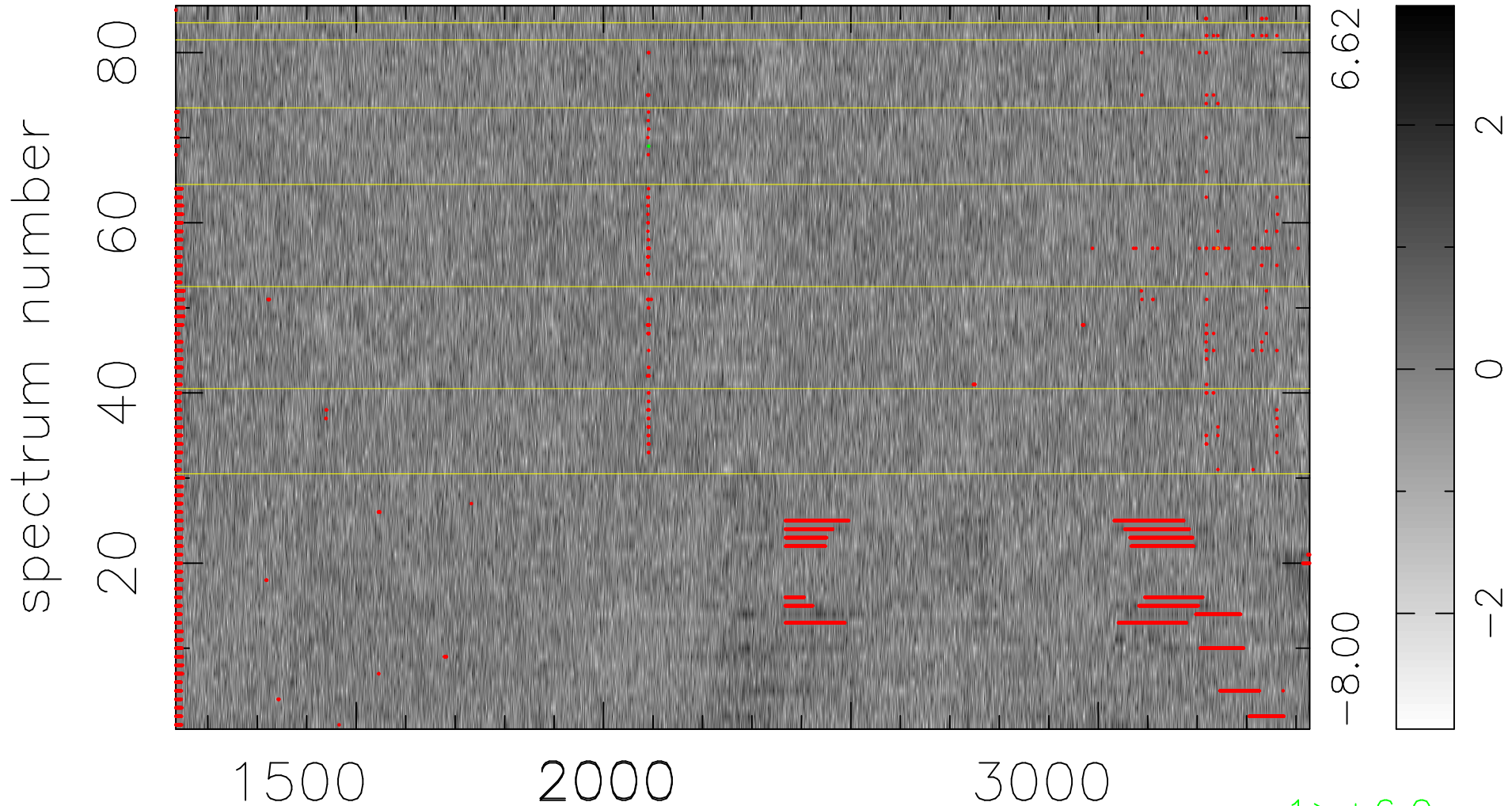


$$\chi(\lambda,t) = ( \text{Data} - \text{Model } AC_5 ) / \sigma \chi$$

$$\chi^2 / (389725 - 5031) = 1.037 \Rightarrow 1.008$$

4585x85



bad:5594=1.4%

$z = 1.68128$

$1 > +6.0\sigma$

$1 < -6.0\sigma$