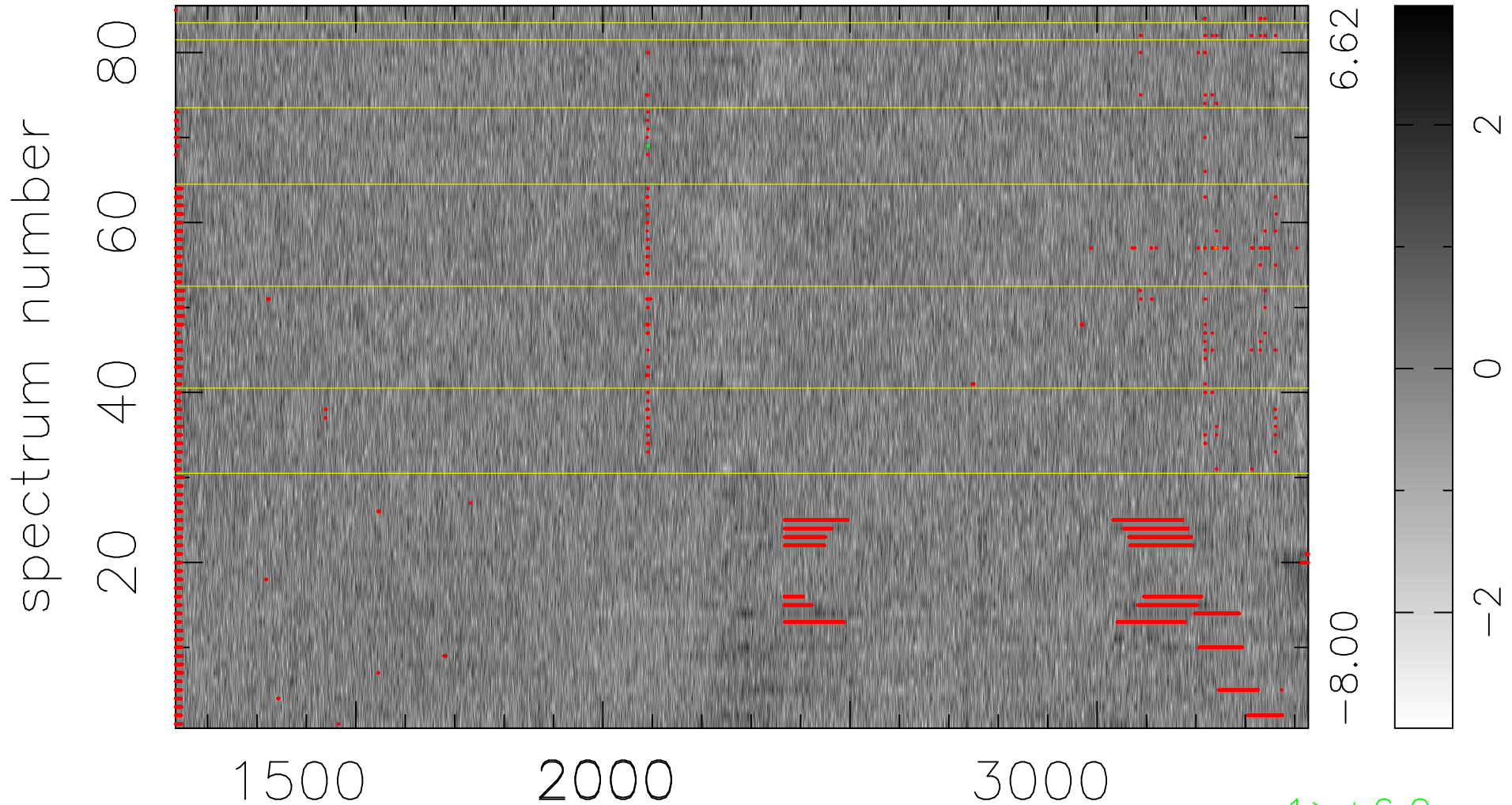


$$\chi(\lambda, t) = (\text{Data} - \text{Model } \text{AC}_5\text{B}_5\text{F}) / \sigma \chi$$

$$\chi^2 / (389725 - 5284) = 1.035 \Rightarrow 1.008$$

4585x85



bad:5594=1.4%

λ (Å) $z = 1.68128$

1 > +6.0 σ

1 < -6.0 σ