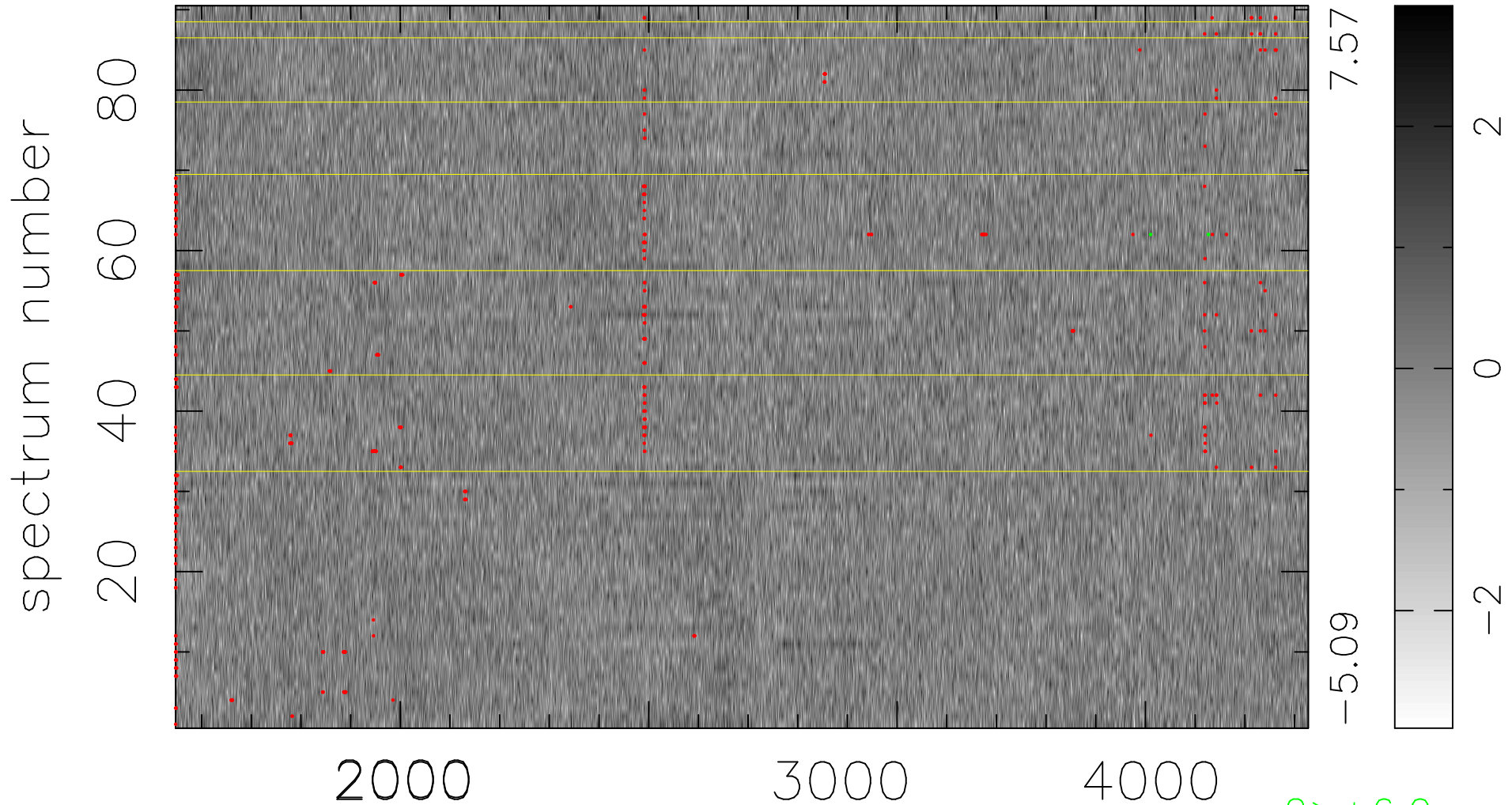


$$\chi(\lambda,t) = (\text{Data} - \text{Model } \text{AC}_5\text{B}_3\text{F}) / \sigma \chi$$

$$\chi^2 / (410490 - 5093) = 0.962 \Rightarrow 1.007$$

4561 × 90



bad:486=0.12% λ (Å) $z = 1.22928$