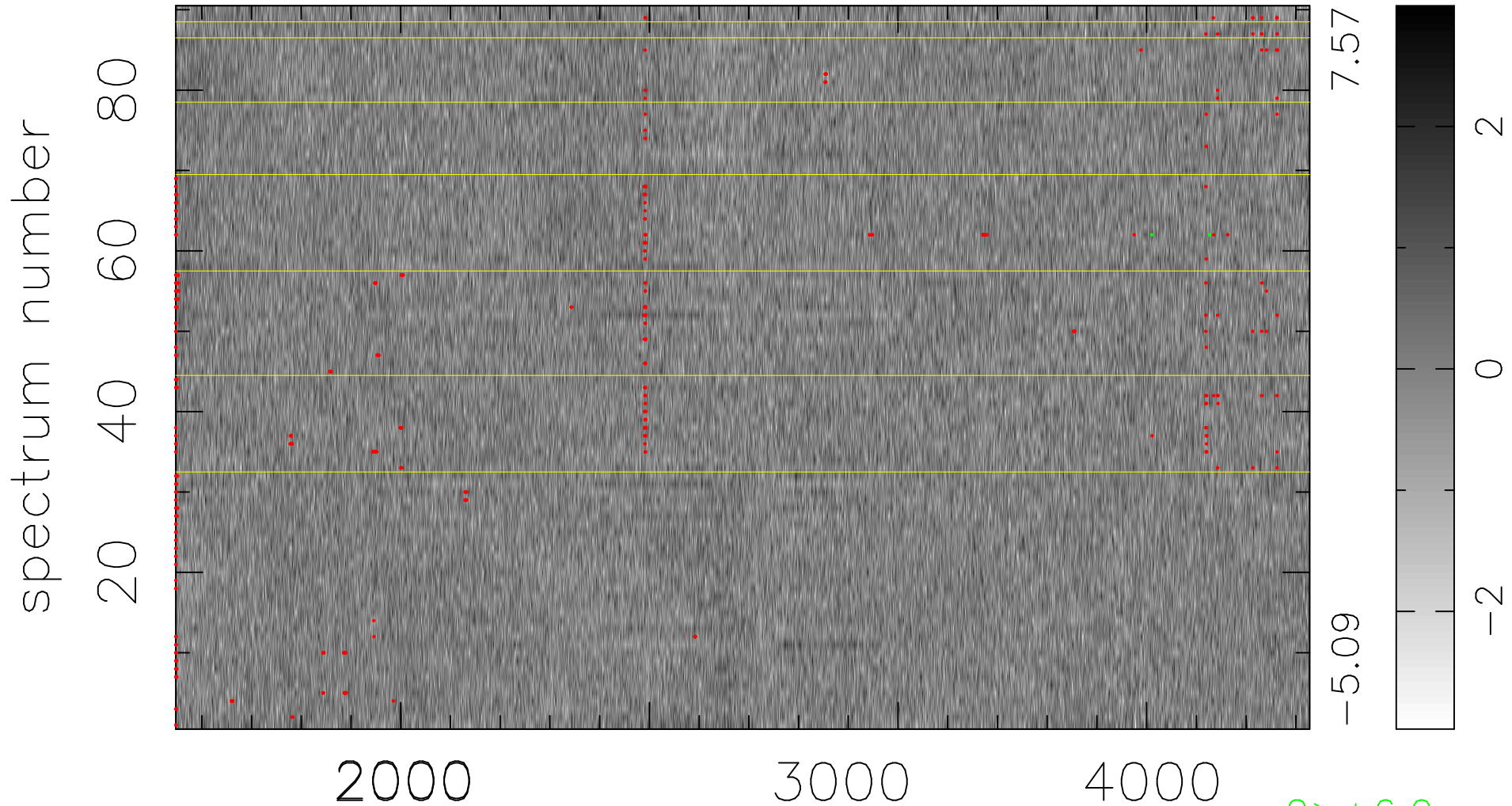


$$\chi(\lambda, t) = ( \text{Data} - \text{Model } \text{AC}_5\text{B}_3\text{F} ) / \sigma \chi$$

$$\chi^2 / (410490 - 5093) = 0.962 \Rightarrow 1.007$$

4561 × 90



bad:486=0.12%     $\lambda$  (Å)     $z = 1.22928$