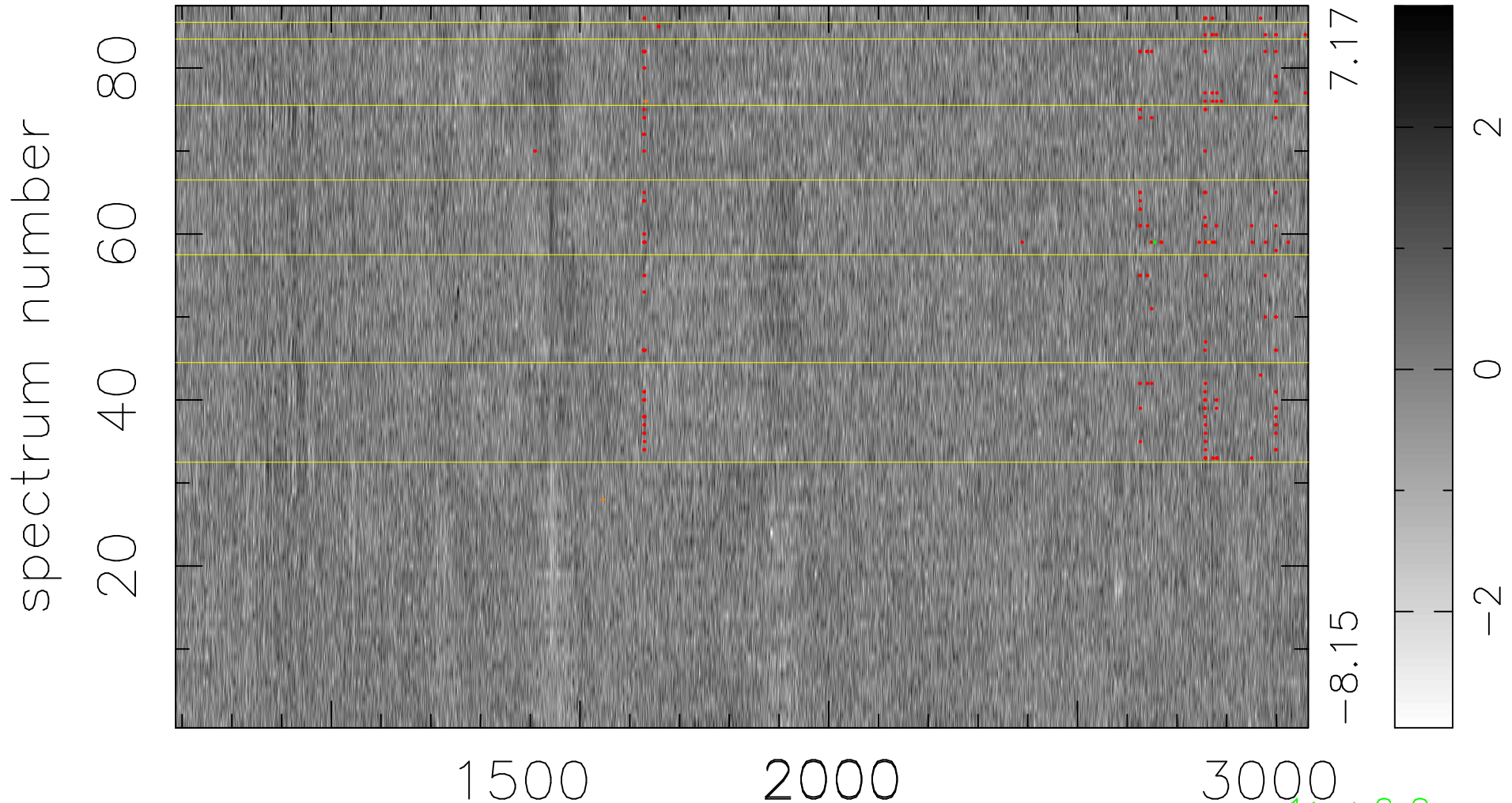


$$\chi(\lambda, t) = ( \text{Data} - \text{Model } \text{AC}_5\text{B}_7\text{F} ) / \sigma \chi$$

$$\chi^2 / (396285 - 5413) = 0.959 \Rightarrow 1.007$$

4555x87



bad:191=0.048%  $\lambda$  (Å)  $z = 2.31667$

1 > +6.0 $\sigma$

3 < -6.0 $\sigma$