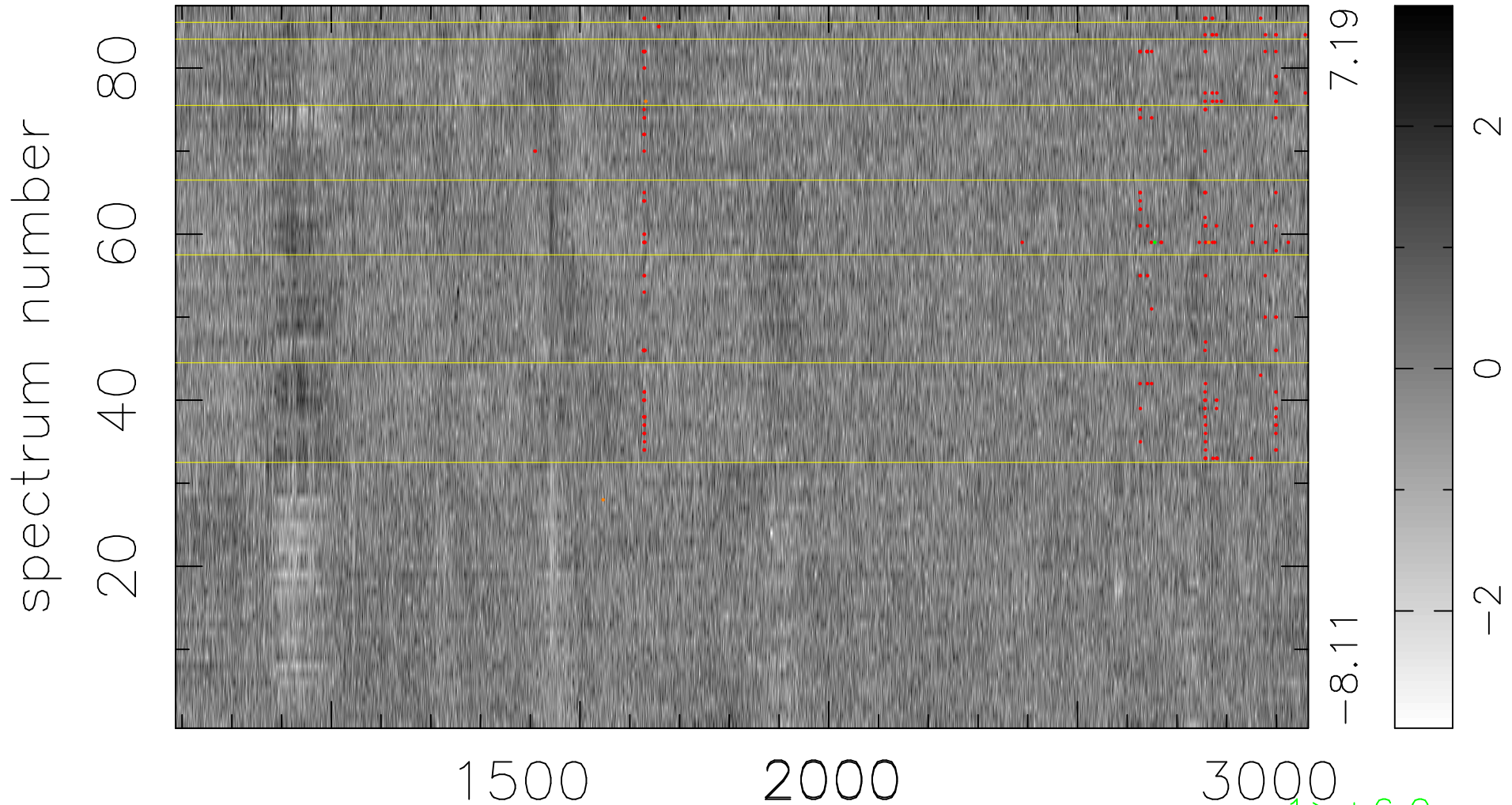


$$\chi(\lambda, t) = ( \text{Data} - \text{Model AC}_5\text{F} ) / \sigma \chi$$

$$\chi^2 / (396285 - 5278) = 0.981 \Rightarrow 1.007$$

4555x87



7.19  
-8.11

2  
0  
-2

1 > +6.0σ  
3 < -6.0σ

bad:191=0.048% λ (Å) z = 2.31667