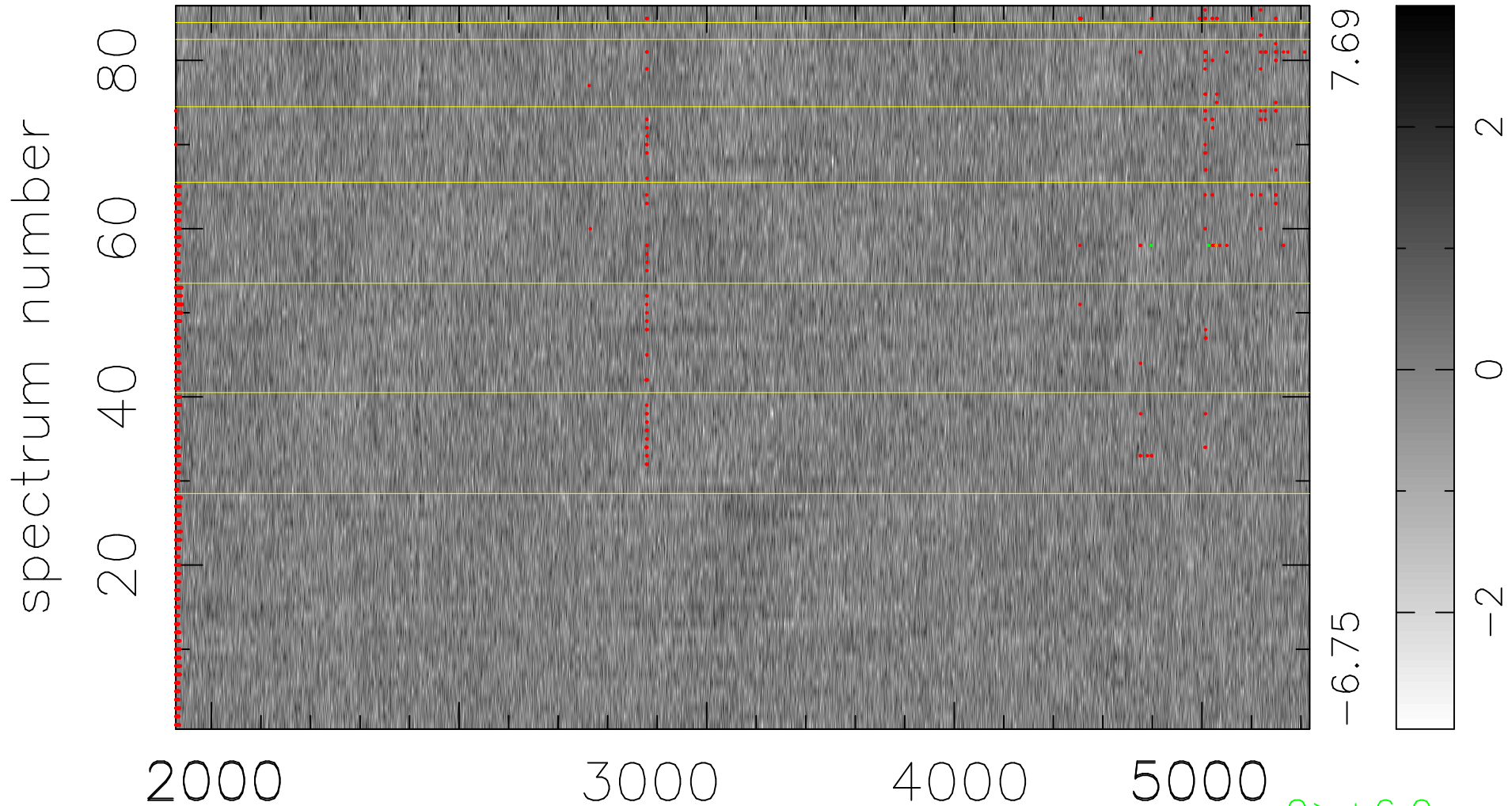


$$\chi(\lambda, t) = (\text{Data} - \text{Model } \text{AC}_5\text{B}_3\text{F}) / \sigma \chi$$

$$\chi^2 / (393880 - 5138) = 0.892 \Rightarrow 1.008$$

4580x86



bad:1200=0.30% λ (Å) $z = 0.86511$

2 > +6.0σ
1 < -6.0σ