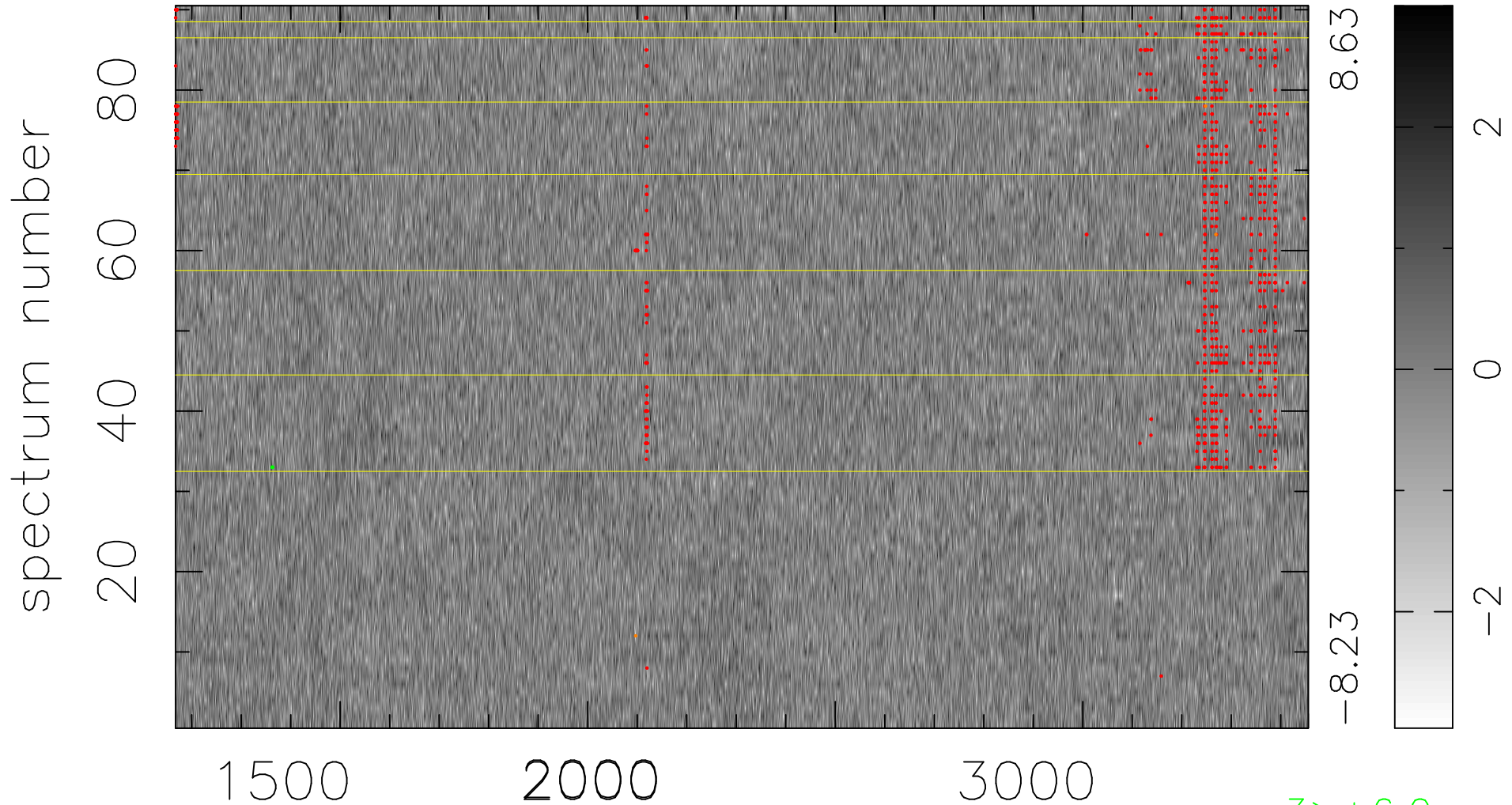


$$\chi(\lambda, t) = ( \text{Data} - \text{Model } \text{AC}_5\text{B}_5\text{F} ) / \sigma \chi$$

$$\chi^2 / (411930 - 5268) = 1.023 \Rightarrow 1.007$$

4577x90



bad:821=0.20%

$\lambda$  (Å)  $z = 1.64665$

3 > +6.0σ

3 < -6.0σ