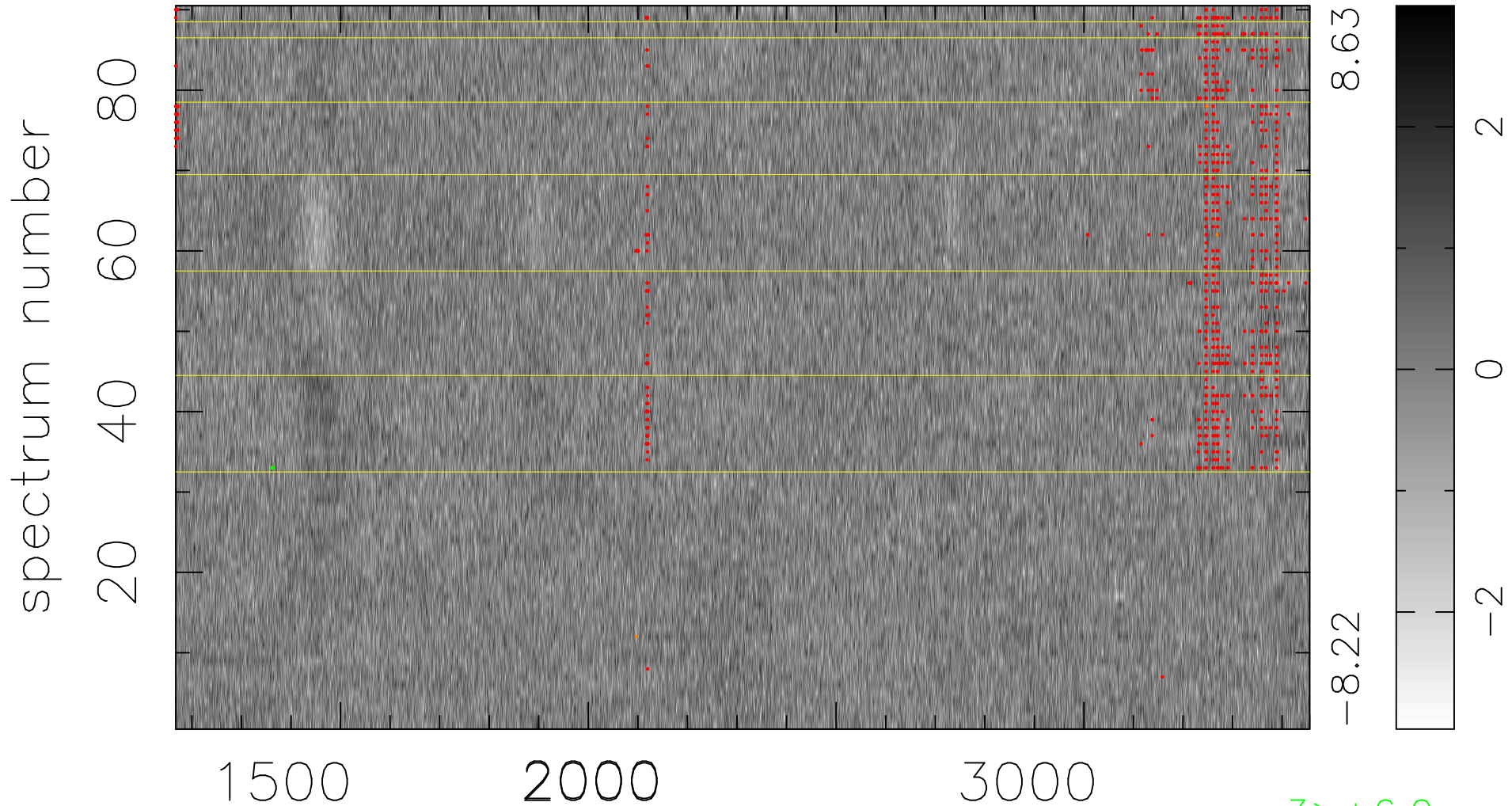


$$\chi(\lambda, t) = ( \text{Data} - \text{Model } AC_5 ) / \sigma \chi$$

$$\chi^2 / (411930 - 5047) = 1.029 \Rightarrow 1.007$$

4577x90



bad:821=0.20%

$\lambda$  (Å)  $z = 1.64665$

3 > +6.0 $\sigma$

4 < -6.0 $\sigma$