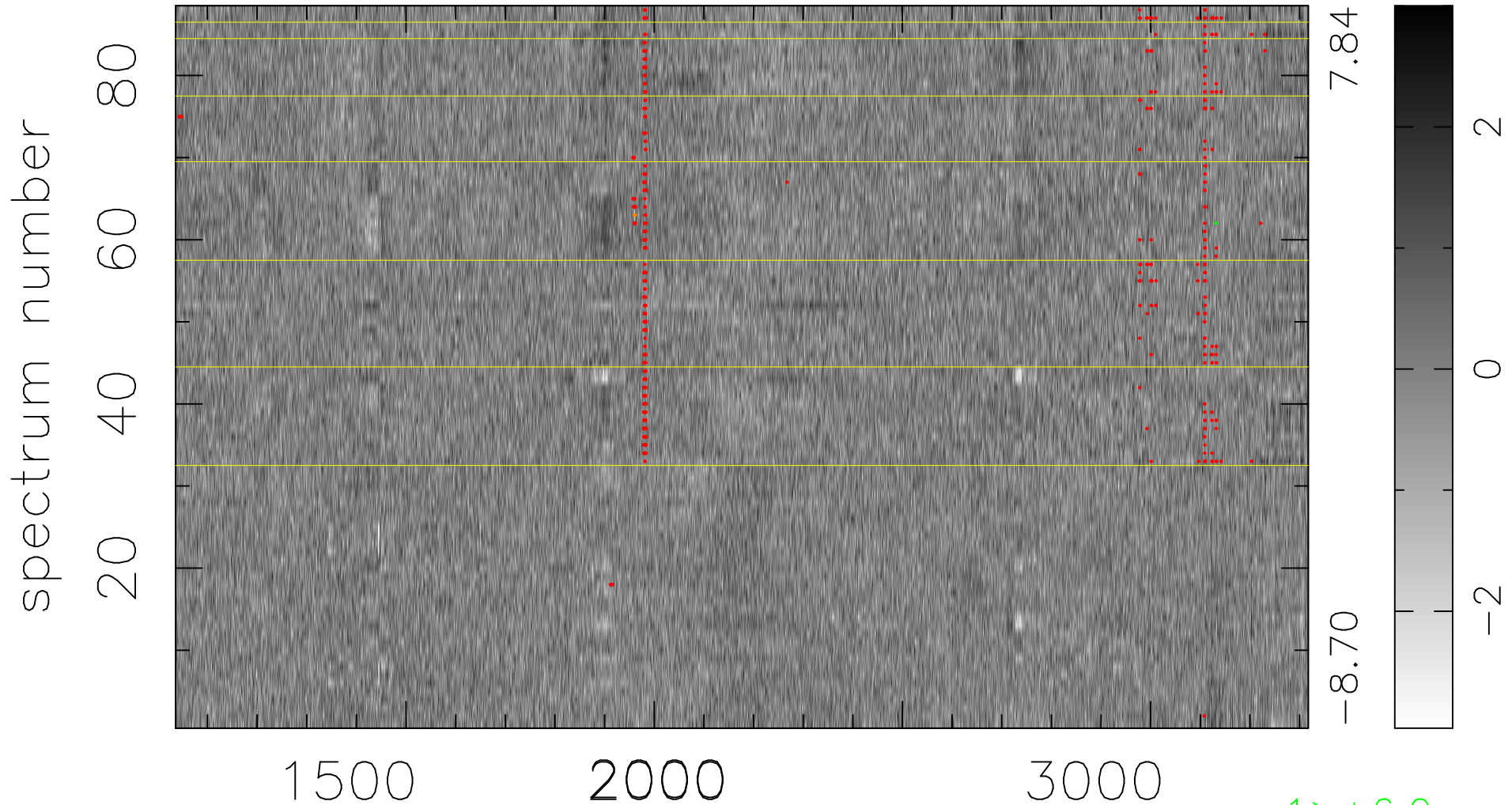


$$\chi(\lambda, t) = (\text{Data} - \text{Model AC}_5\text{F}) / \sigma \chi$$

$$\chi^2 / (401632 - 5134) = 1.038 \Rightarrow 1.008$$

4564x88



bad:539=0.13%

λ (Å) $z = 1.81982$

1 > +6.0σ

4 < -6.0σ