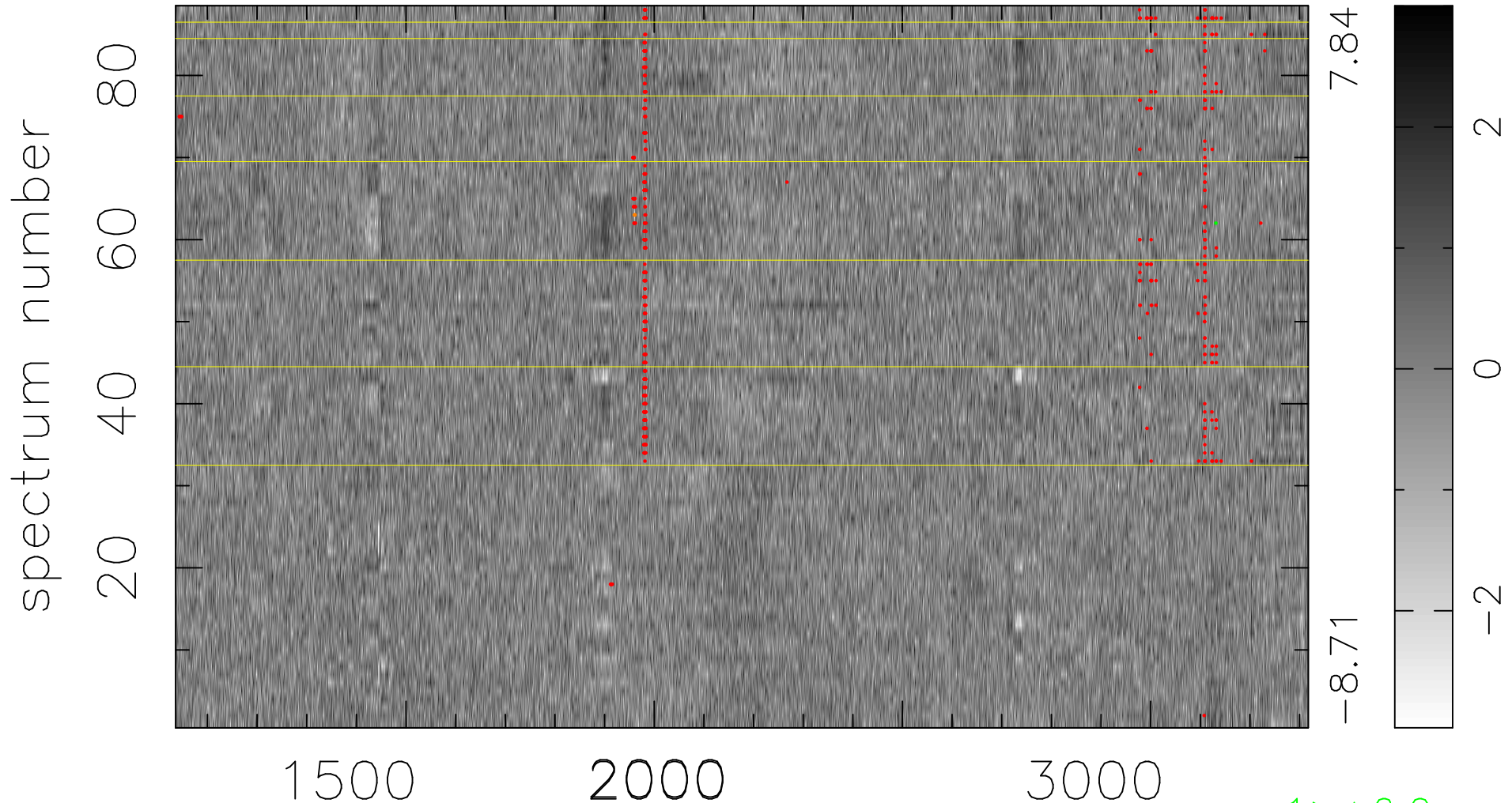


$$\chi(\lambda,t) = (\text{Data} - \text{Model } AC_5) / \sigma \chi$$

$$\chi^2 / (401632 - 5046) = 1.041 \Rightarrow 1.008$$

4564x88



bad:539=0.13%

λ (Å) $z = 1.81982$

1 > +6.0σ

4 < -6.0σ