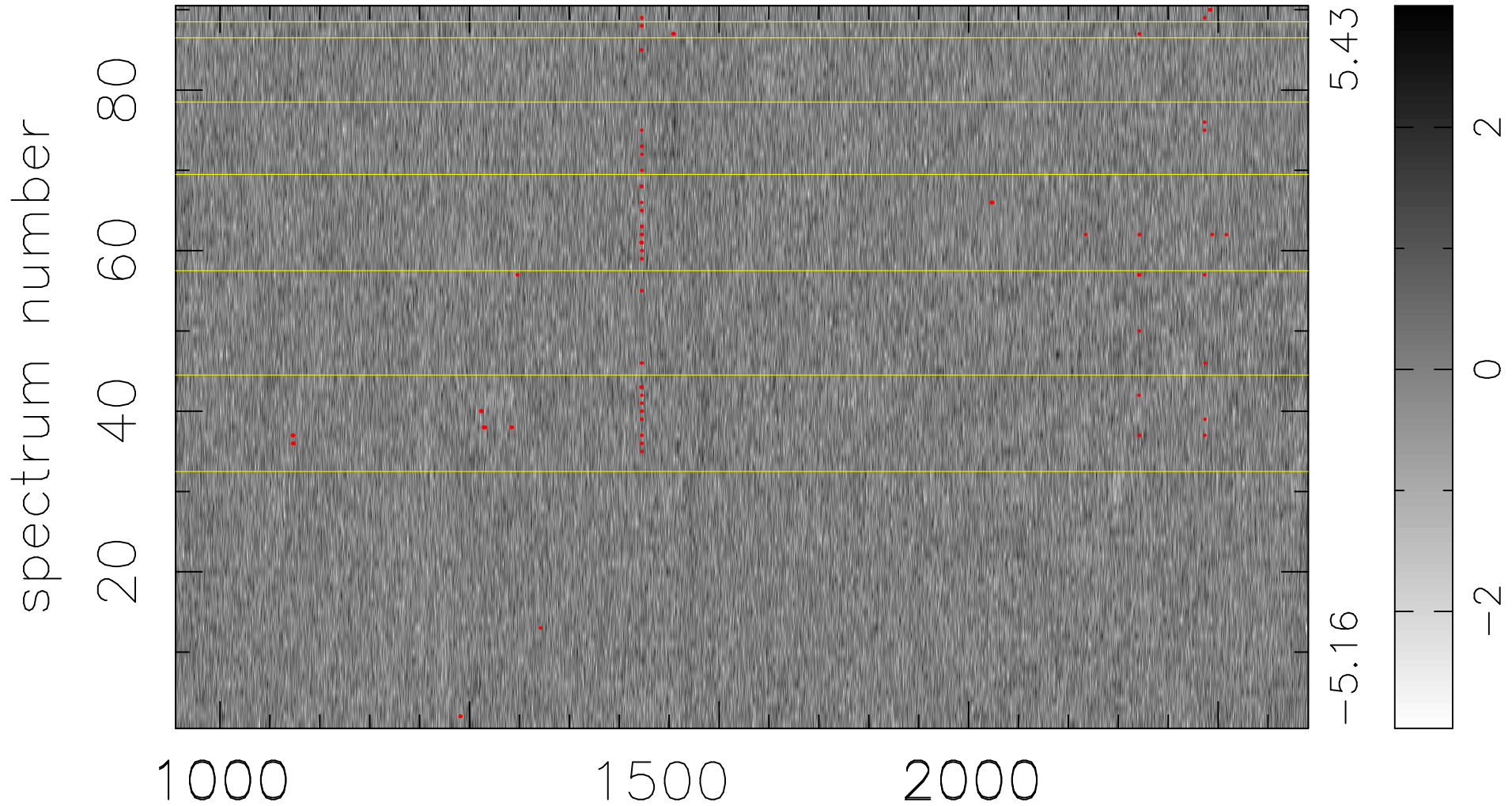


$$\chi(\lambda, t) = (\text{Data} - \text{Model } \text{AC}_5\text{B}_6\text{F}) / \sigma \chi$$

$$\chi^2 / (408600 - 5354) = 0.904 \Rightarrow 1.008$$

4540x90



bad:133=0.033% λ (Å) $z = 2.77985$