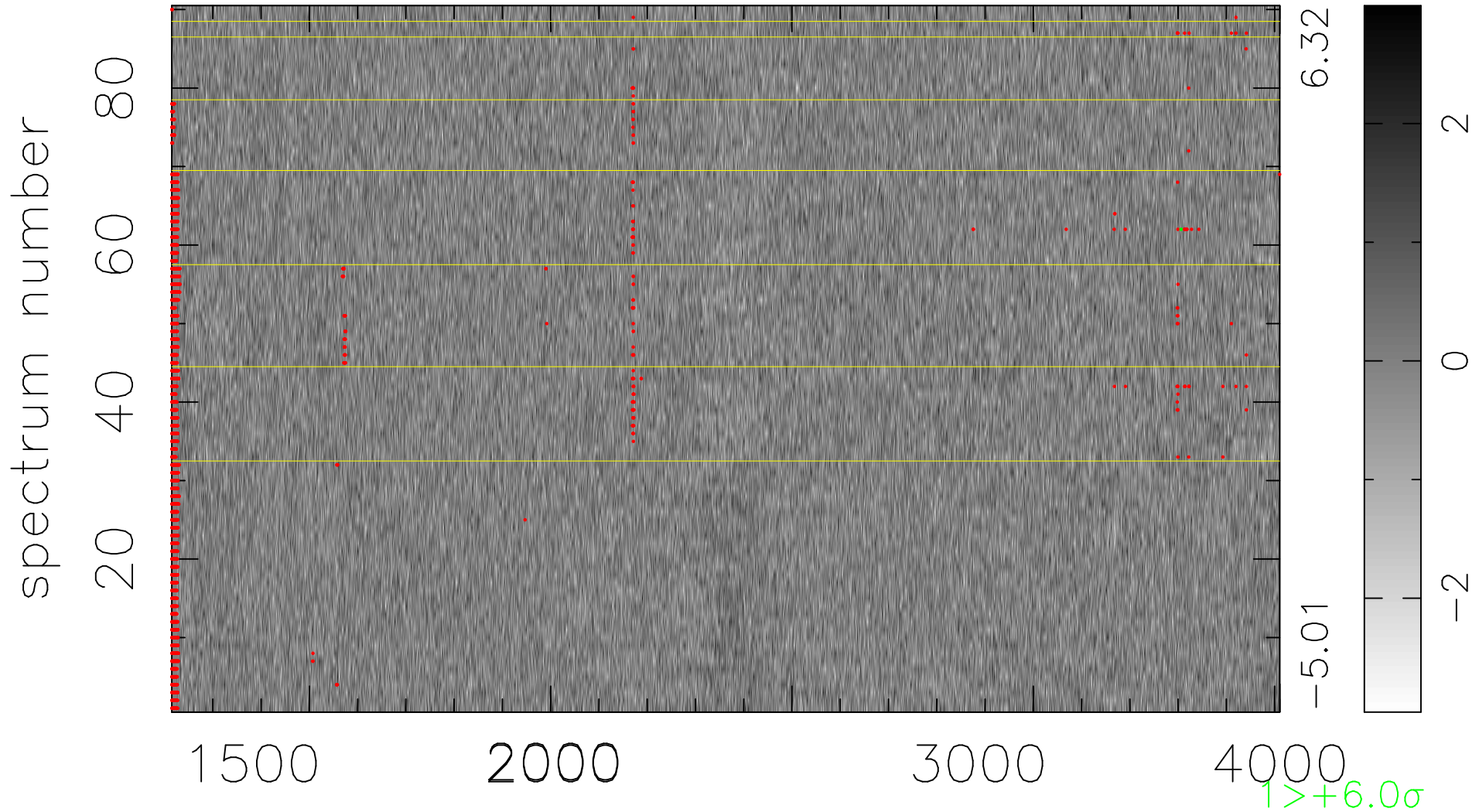


$$\chi(\lambda, t) = ( \text{Data} - \text{Model } \text{AC}_5\text{B}_5\text{F} ) / \sigma \chi$$

$$\chi^2 / (413280 - 5335) = 0.973 \Rightarrow 1.007$$

4592x90



bad:2073=0.50%  $\lambda$  (Å)  $z = 1.58407$