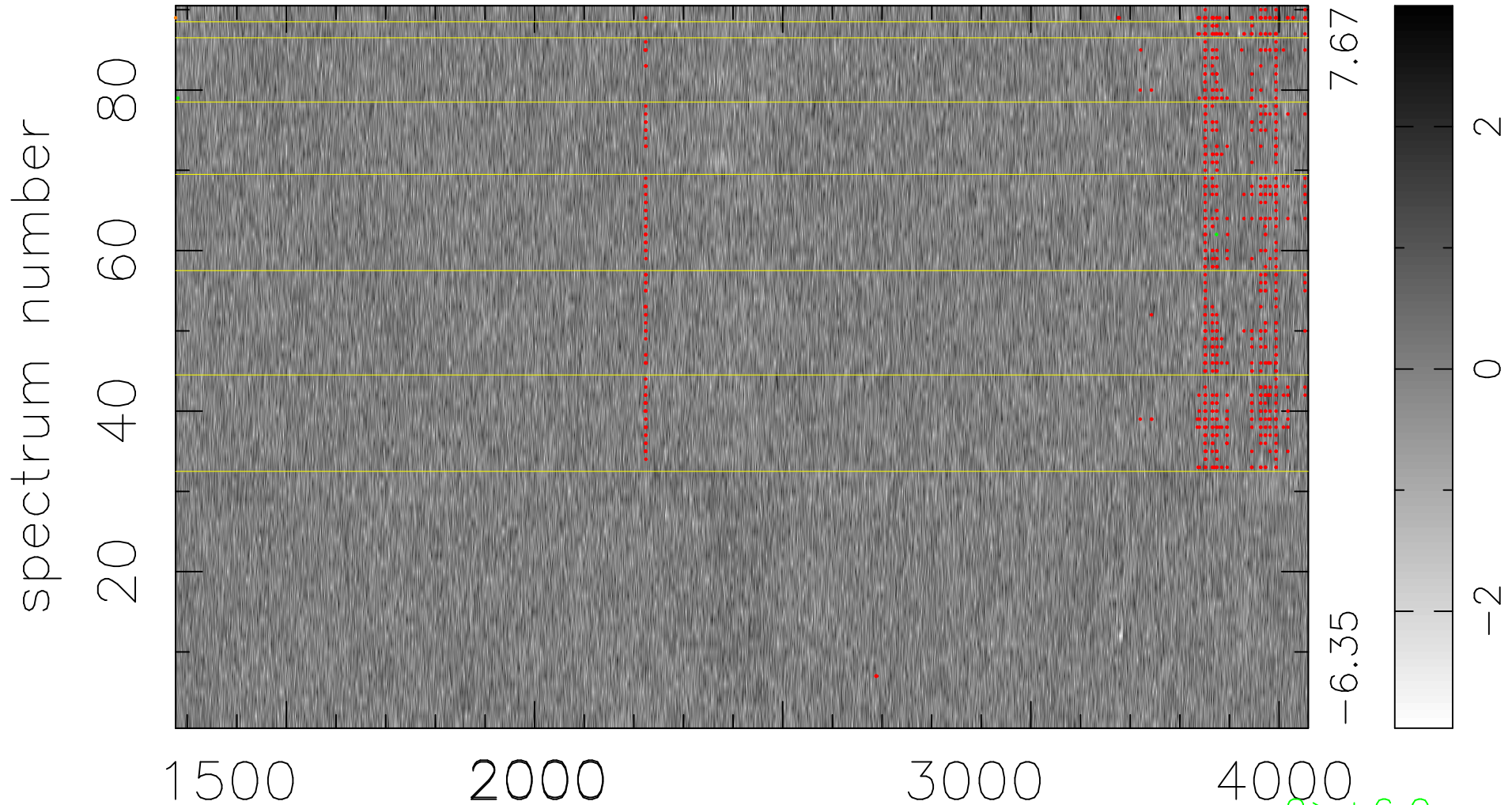


$$\chi(\lambda, t) = (\text{Data} - \text{Model } \text{AC}_5\text{B}_4\text{F}) / \sigma \chi$$

$$\chi^2 / (410850 - 5164) = 0.904 \Rightarrow 1.007$$

4565x90



bad:699=0.17%

λ (Å) $z = 1.52202$

2 > +6.0σ
1 < -6.0σ