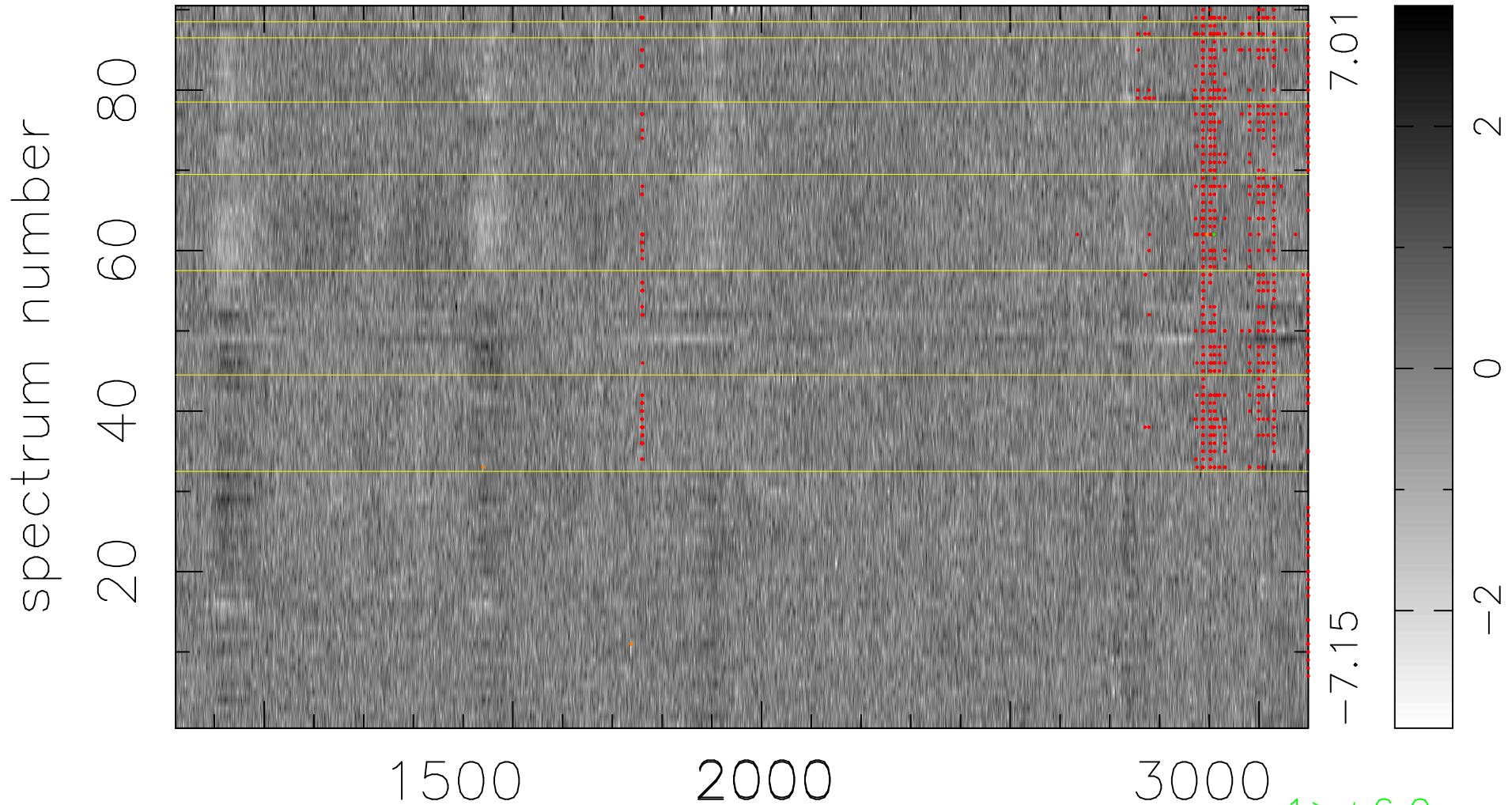


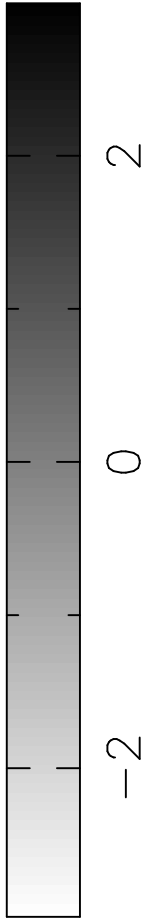
$$\chi(\lambda, t) = (\text{Data} - \text{Model AC}_5\text{F}) / \sigma \chi$$

$$\chi^2 / (409950 - 5315) = 1.020 \Rightarrow 1.008$$

4555x90



7.01
-7.15



bad:852=0.21% λ (Å) $z = 2.12238$

1 > +6.0σ

4 < -6.0σ