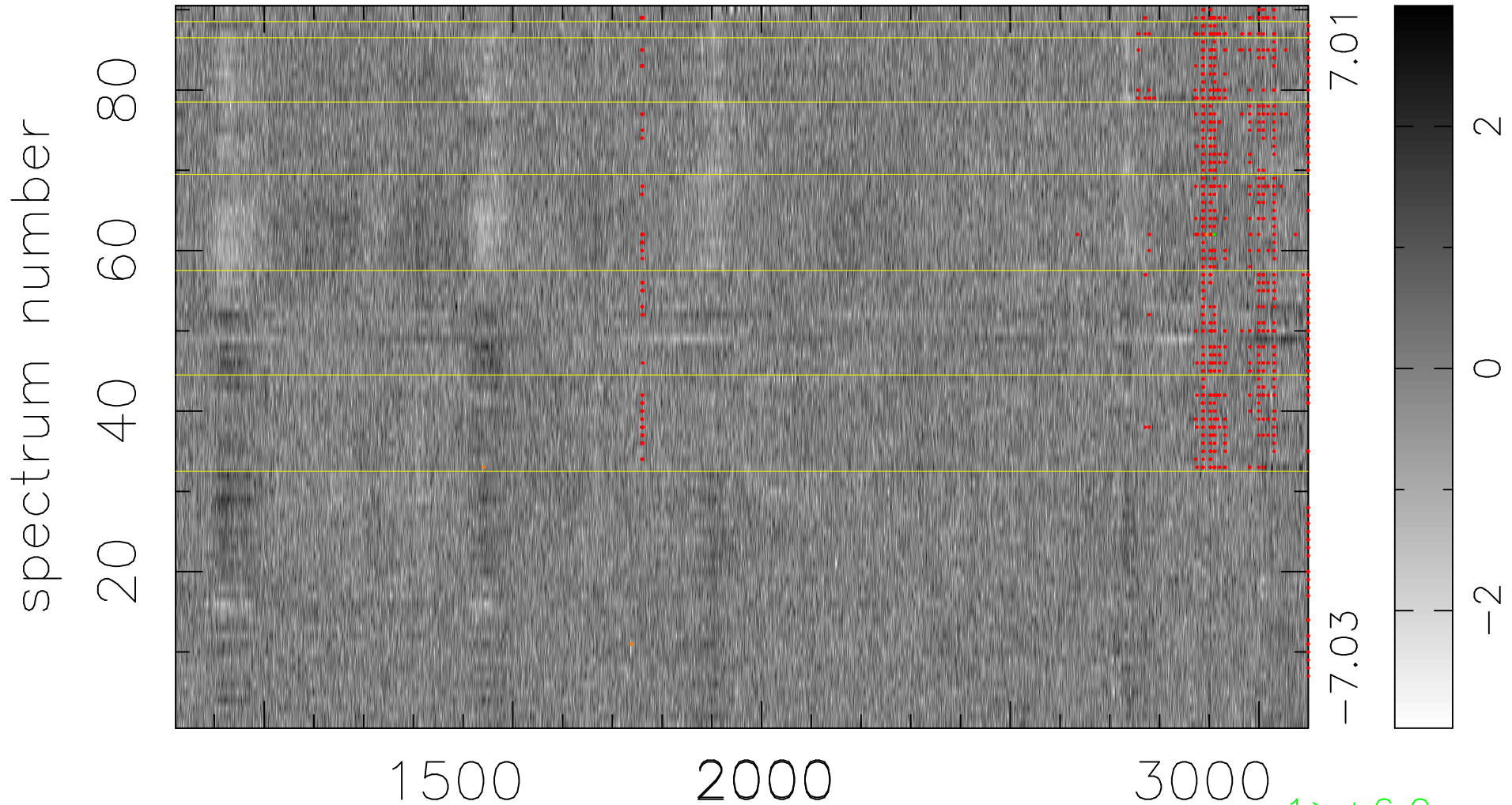


$$\chi(\lambda,t) = ( \text{Data} - \text{Model } AC_5 ) / \sigma \chi$$

$$\chi^2 / (409950 - 5225) = 1.025 \Rightarrow 1.008$$

4555x90



bad:852=0.21%

$\lambda$  (Å)  $z = 2.12238$

1 > +6.0σ

4 < -6.0σ