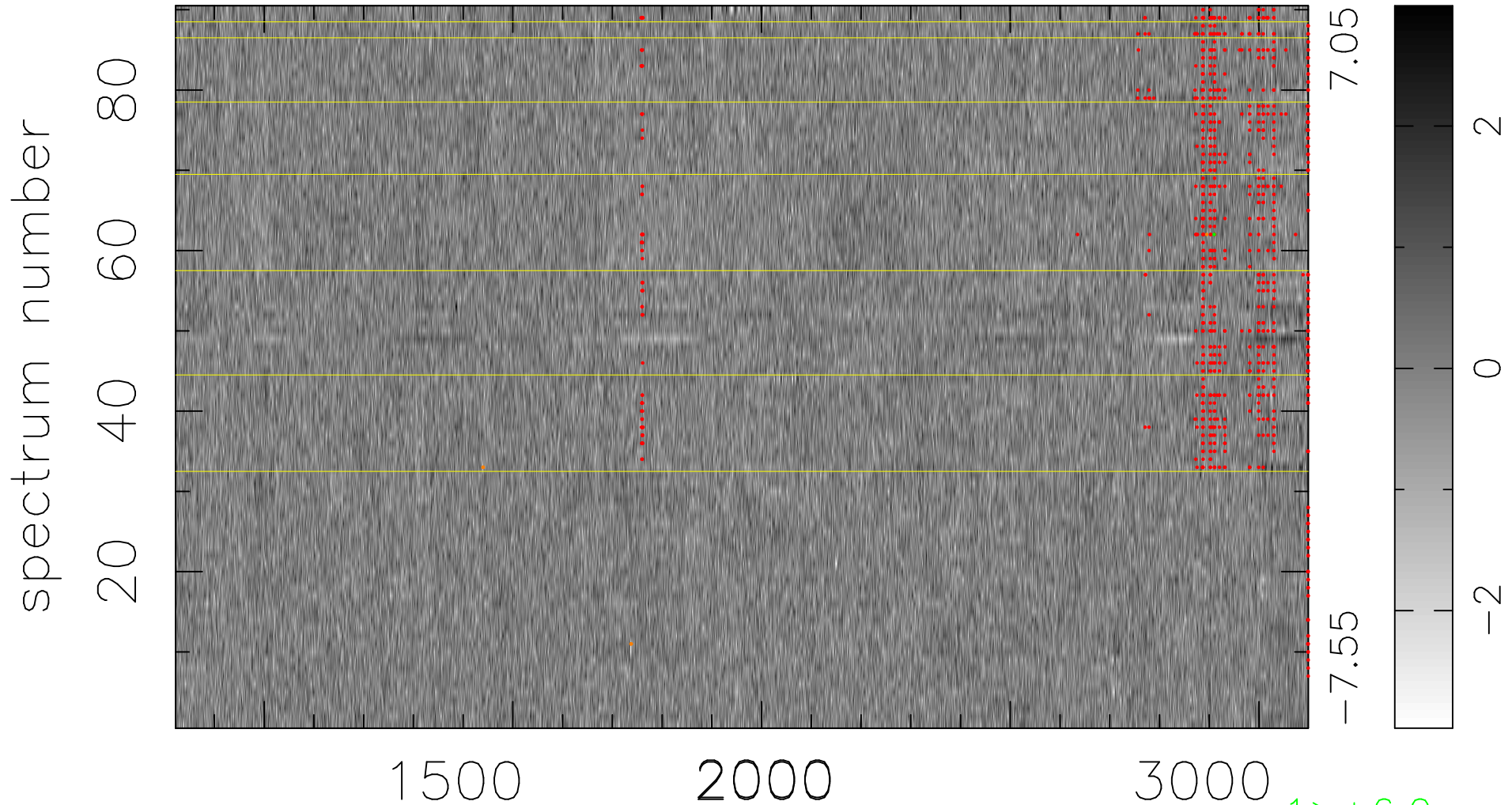


$$\chi(\lambda, t) = (\text{Data} - \text{Model AC}_5\text{B}_7\text{F}) / \sigma \chi$$

$$\chi^2 / (409950 - 5489) = 0.993 \Rightarrow 1.008$$

4555x90



bad:852=0.21%

λ (Å) $z = 2.12238$

1 > +6.0 σ

5 < -6.0 σ