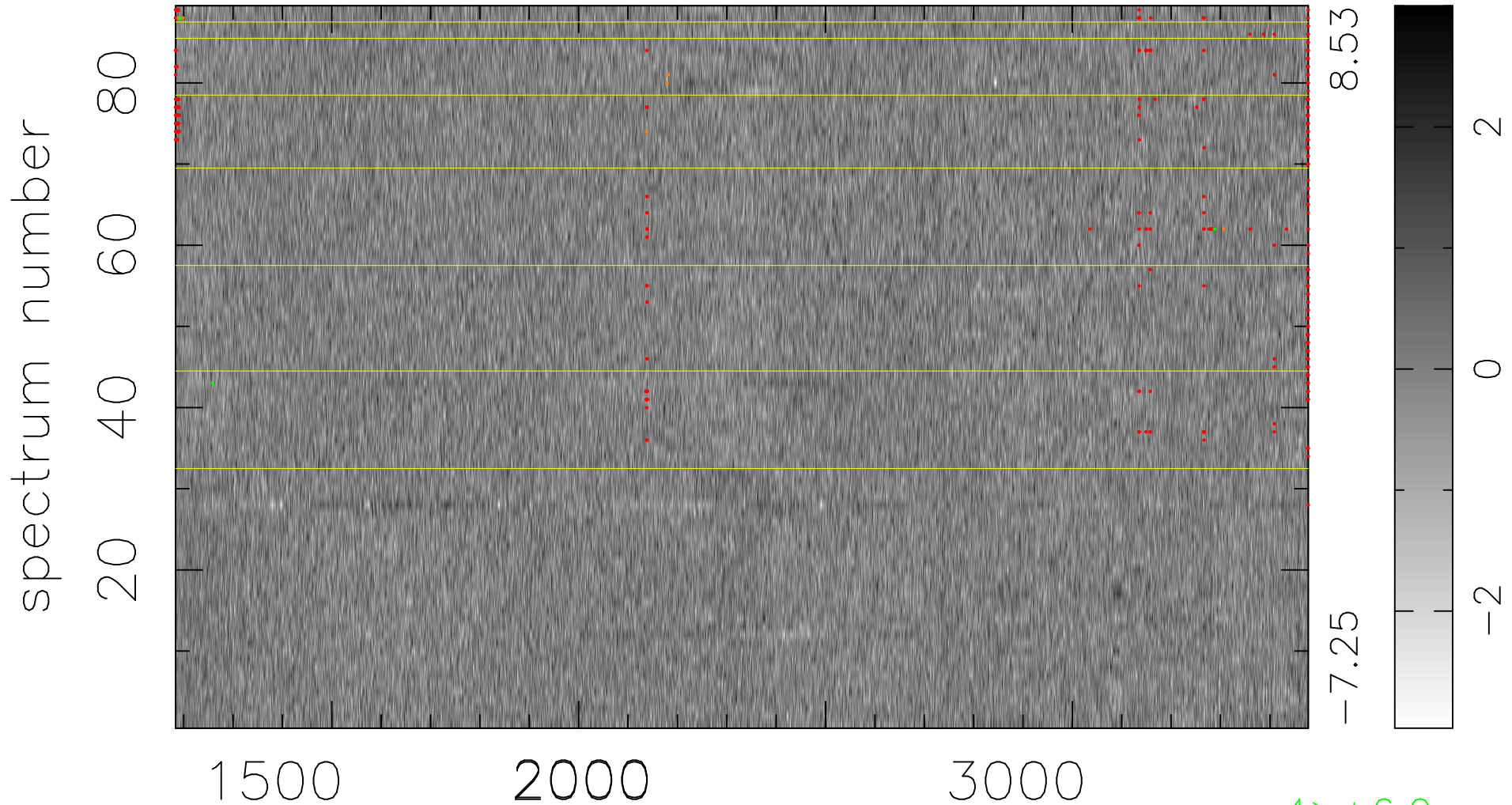


$$\chi(\lambda, t) = (\text{Data} - \text{Model } \text{AC}_5\text{B}_5\text{F}) / \sigma \chi$$

$$\chi^2 / (408421 - 5351) = 0.906 \Rightarrow 1.008$$

4589x89



bad:374=0.092% λ (Å) $z = 1.62335$

4 > +6.0 σ

8 < -6.0 σ