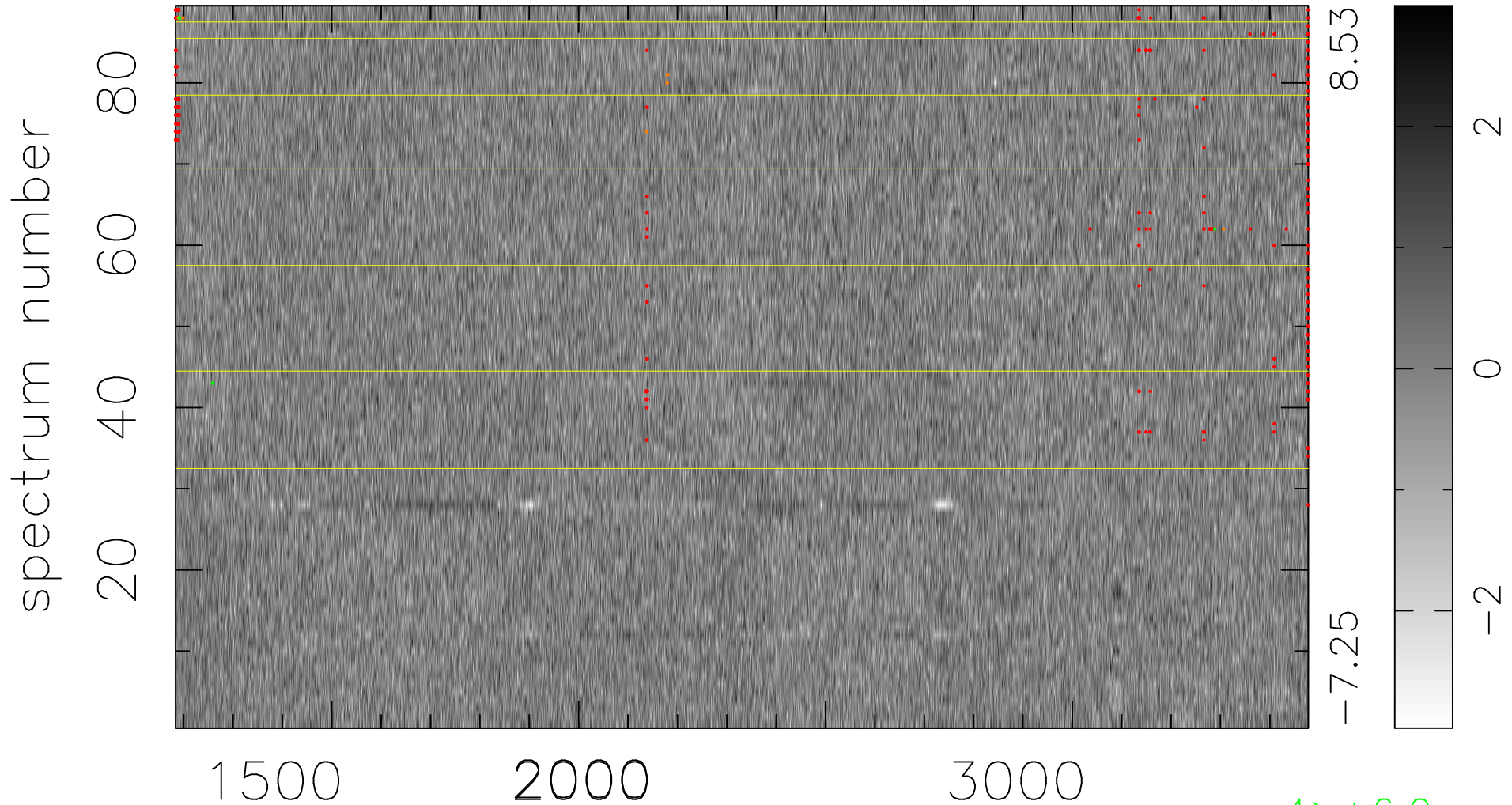


$$\chi(\lambda, t) = ( \text{Data} - \text{Model AC}_5\text{F} ) / \sigma \chi$$

$$\chi^2 / (408421 - 5154) = 0.912 \Rightarrow 1.007$$

4589x89



bad:374=0.092%  $\lambda$  (Å)  $z = 1.62335$

4 > +6.0 $\sigma$

8 < -6.0 $\sigma$