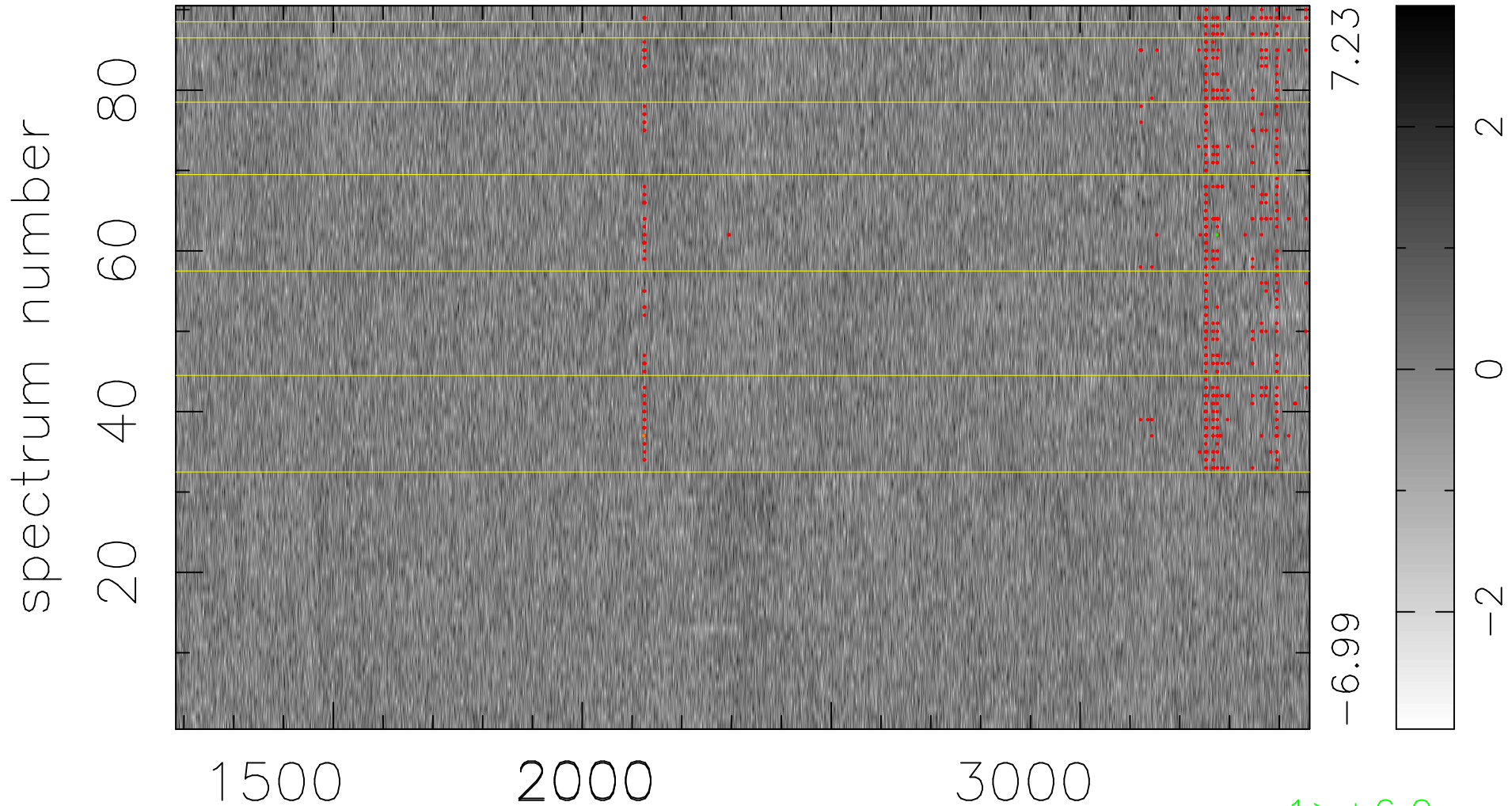


$$\chi(\lambda, t) = ( \text{Data} - \text{Model } \text{AC}_5\text{B}_5\text{F} ) / \sigma \chi$$

$$\chi^2 / (409950 - 5205) = 0.886 \Rightarrow 1.007$$

4555x90



bad:525=0.13%

$\lambda$  (Å)  $z = 1.63976$

1 > +6.0 $\sigma$

1 < -6.0 $\sigma$