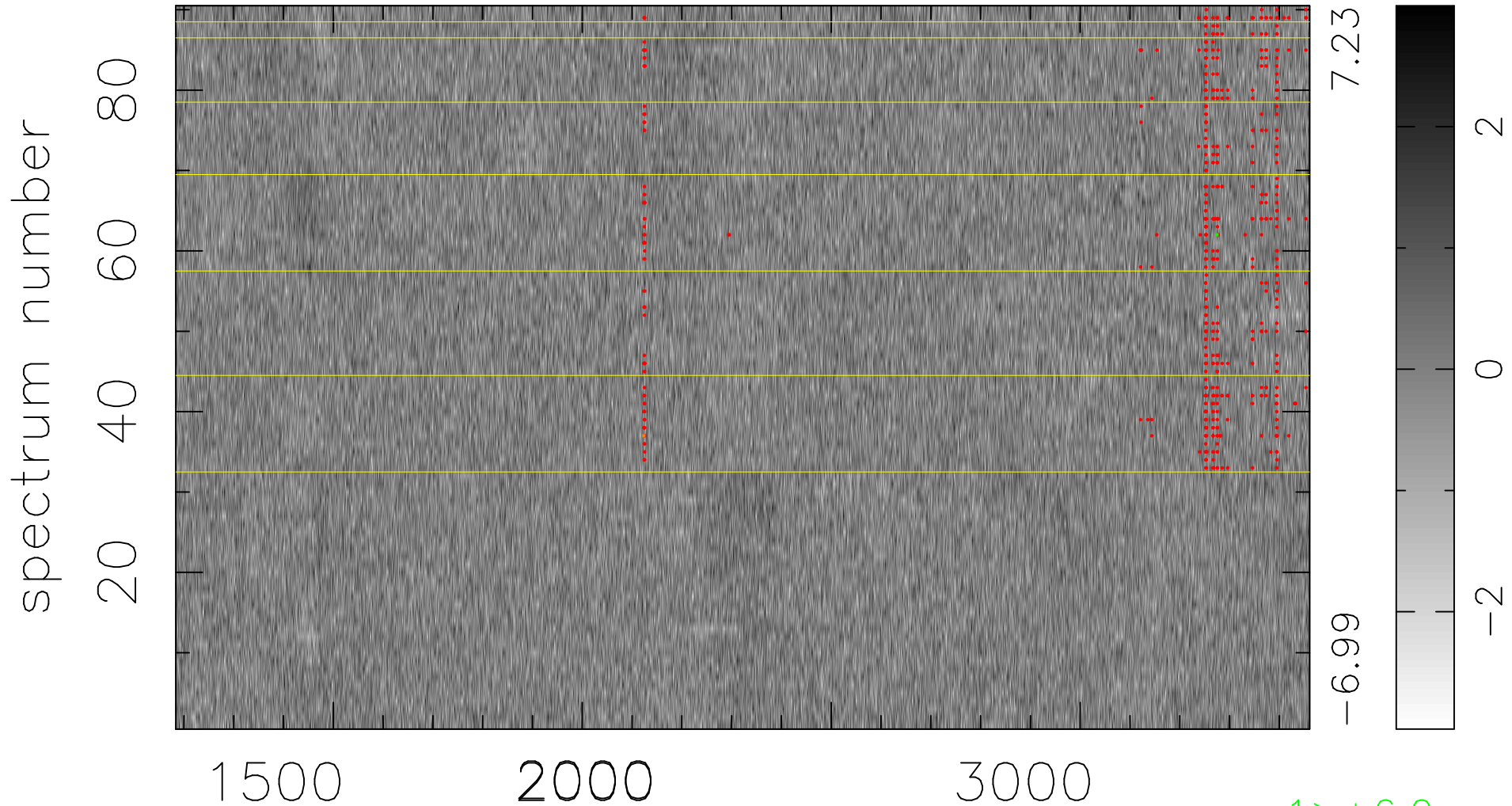


$$\chi(\lambda, t) = (\text{Data} - \text{Model } AC_5) / \sigma \chi$$

$$\chi^2 / (409950 - 5025) = 0.888 \Rightarrow 1.007$$

4555x90



bad:525=0.13%

λ (Å) $z = 1.63976$

1 > +6.0σ

1 < -6.0σ