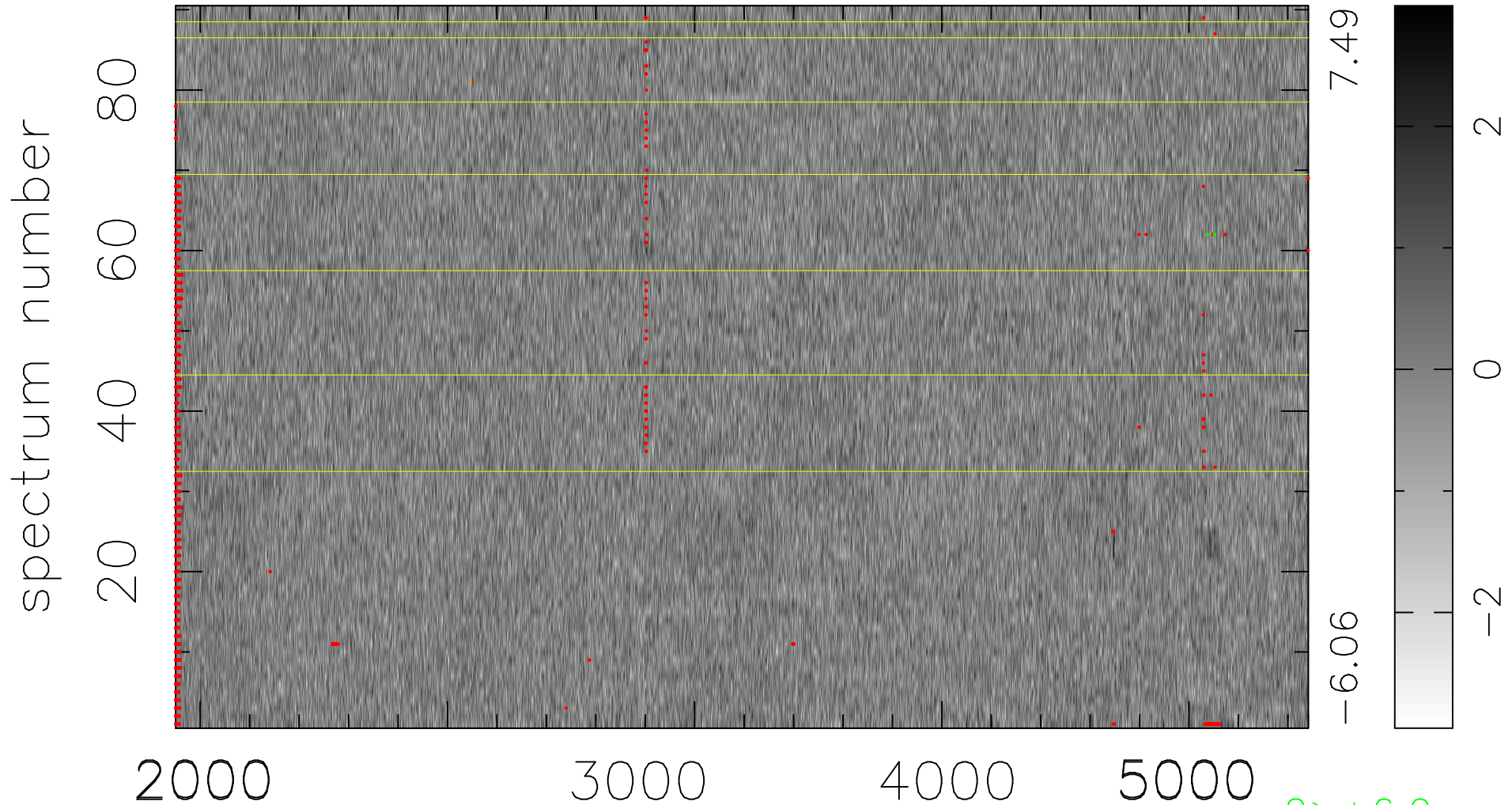


$$\chi(\lambda, t) = ( \text{Data} - \text{Model } \text{AC}_5\text{B}_3\text{F} ) / \sigma \chi$$

$$\chi^2 / (412470 - 5092) = 0.886 \Rightarrow 1.005$$

4583x90



bad:1372=0.33%  $\lambda$  (Å)  $z = 0.84579$

2 > +6.0 $\sigma$   
1 < -6.0 $\sigma$