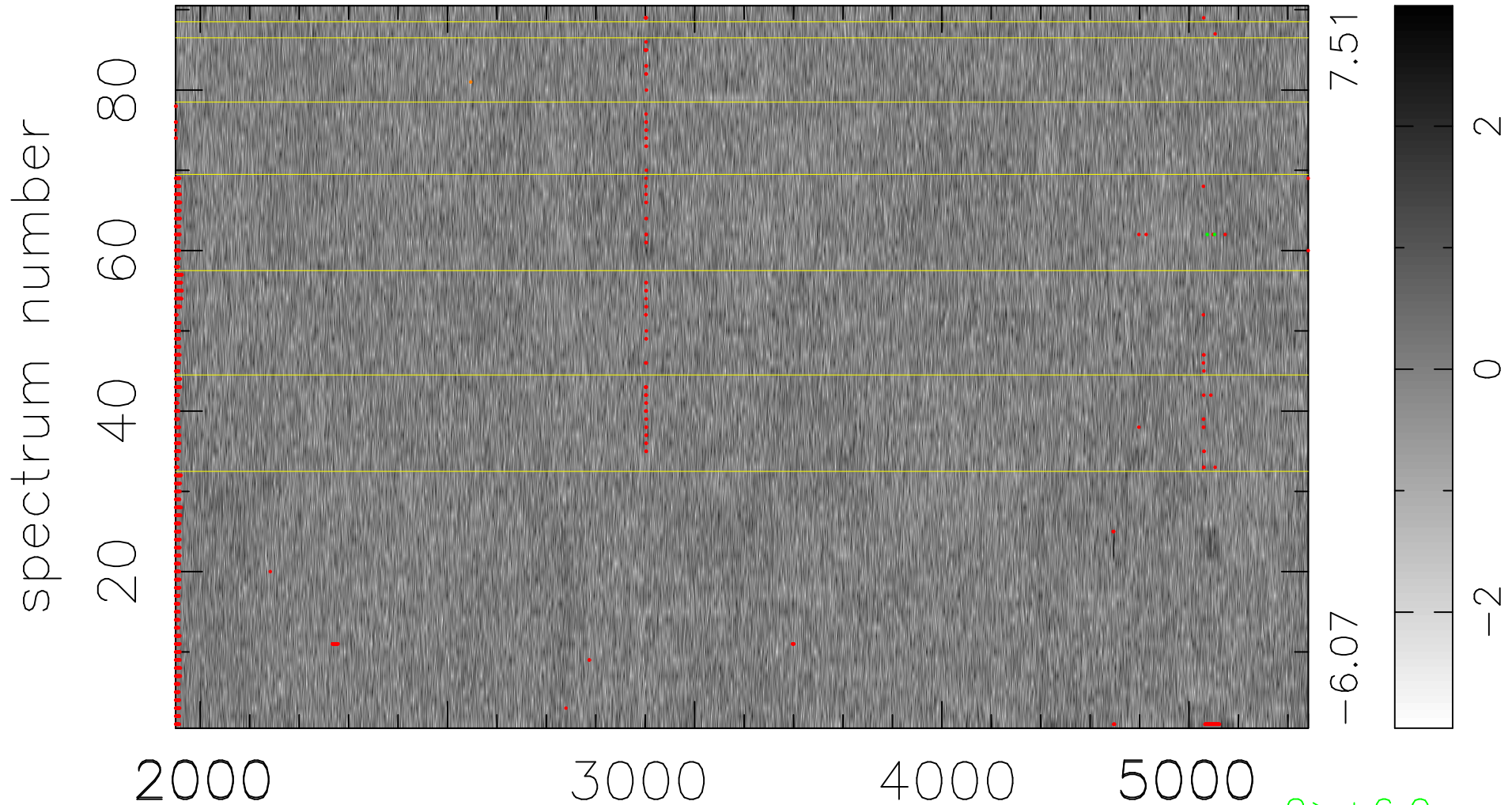


$$\chi(\lambda, t) = ( \text{Data} - \text{Model AC}_5\text{F} ) / \sigma \chi$$

$$\chi^2 / (412470 - 4961) = 0.888 \Rightarrow 1.005$$

4583x90



bad:1372=0.33%  $\lambda$  (Å)  $z = 0.84579$

2 > +6.0σ  
1 < -6.0σ