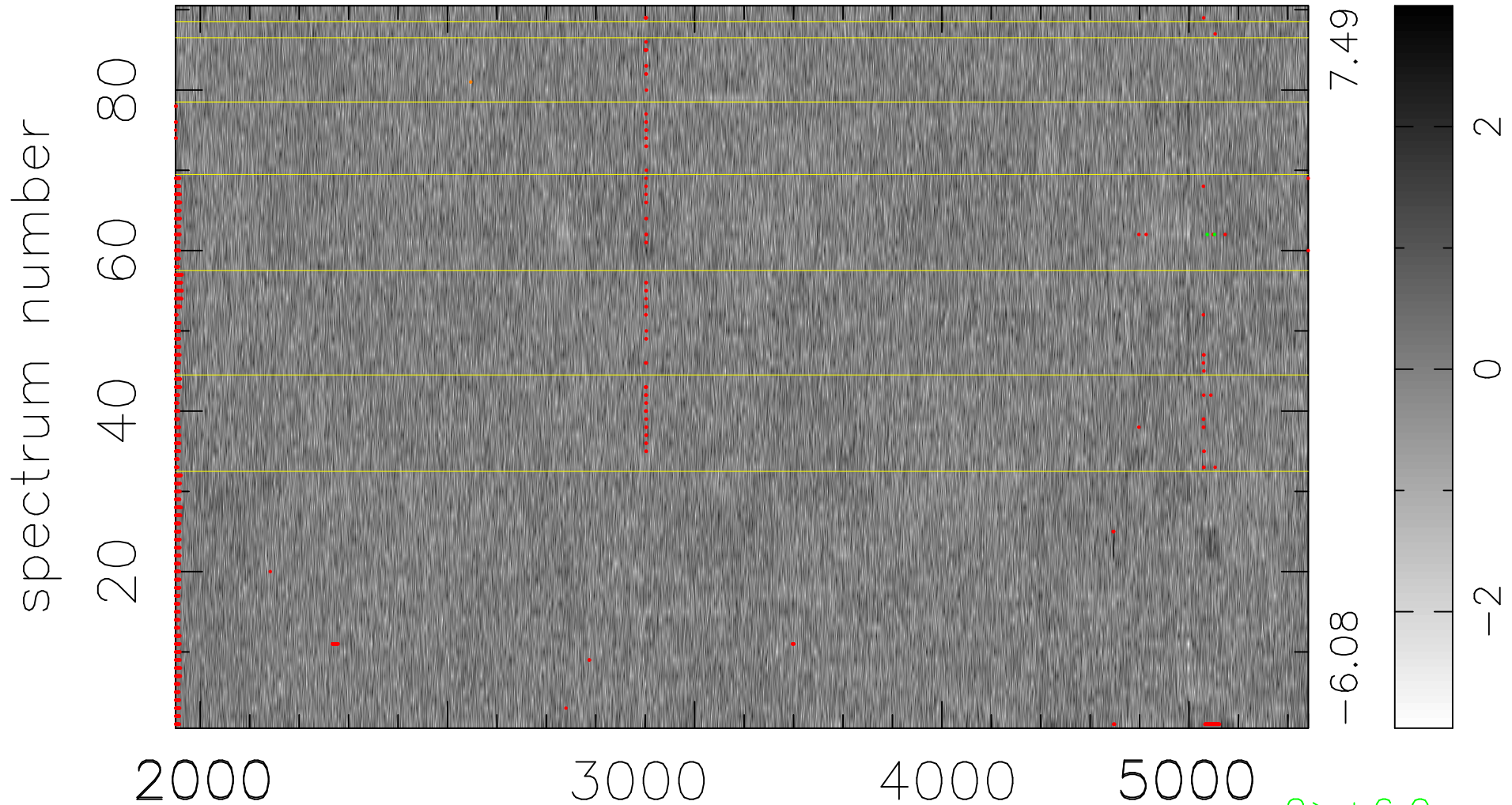


$$\chi(\lambda,t) = ( \text{Data} - \text{Model } AC_5 ) / \sigma \chi$$

$$\chi^2 / (412470 - 4871) = 0.892 \Rightarrow 1.007$$

4583x90



bad:1372=0.33%  $\lambda$  (Å)  $z = 0.84579$

2 > +6.0 $\sigma$

1 < -6.0 $\sigma$