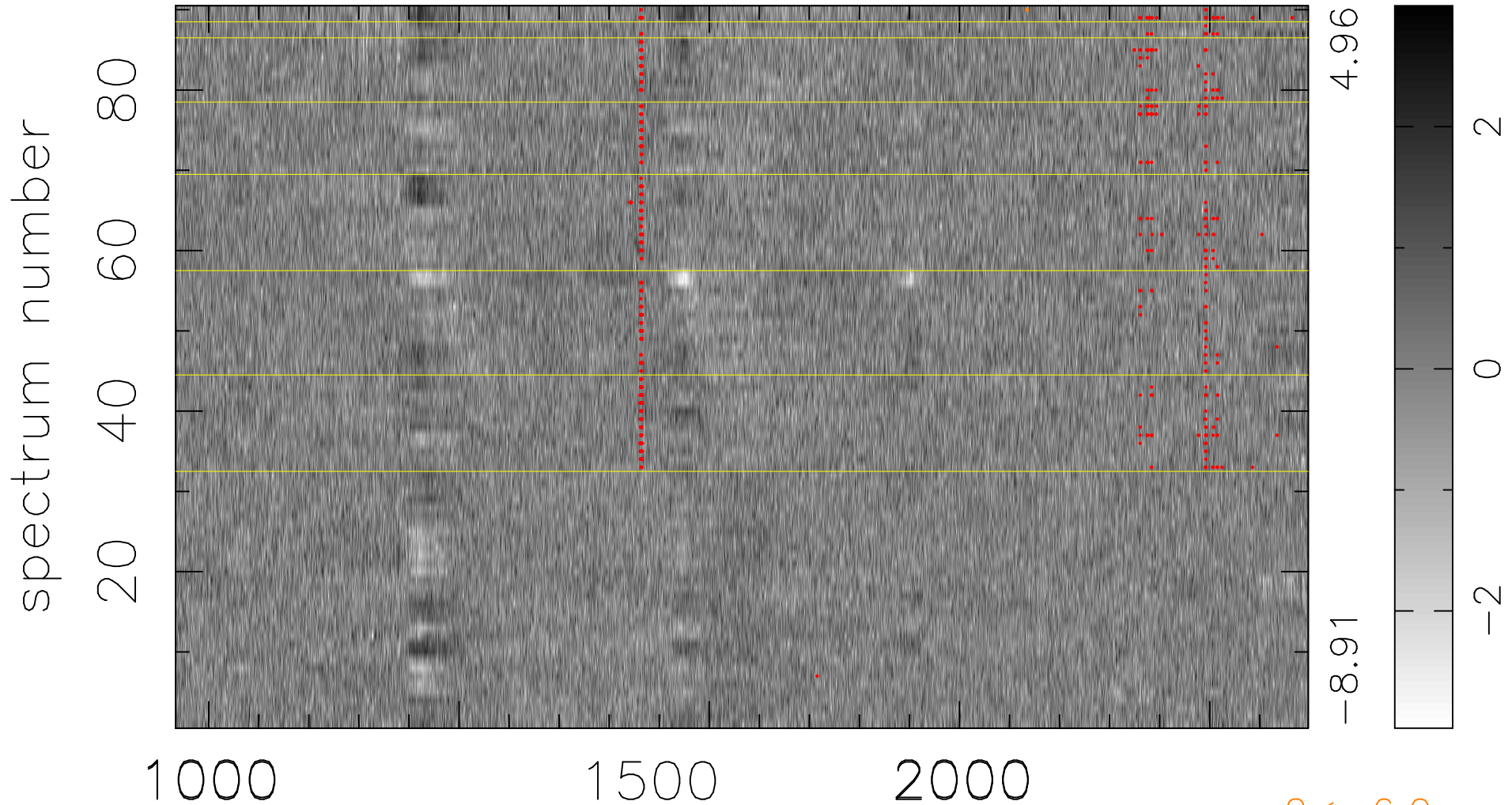


$$\chi(\lambda, t) = (\text{Data} - \text{Model AC}_5\text{F}) / \sigma \chi$$

$$\chi^2 / (407430 - 5192) = 1.033 \Rightarrow 1.007$$

4527x90



$2 < -6.0\sigma$

bad:575=0.14%

λ (Å) $z = 2.74657$