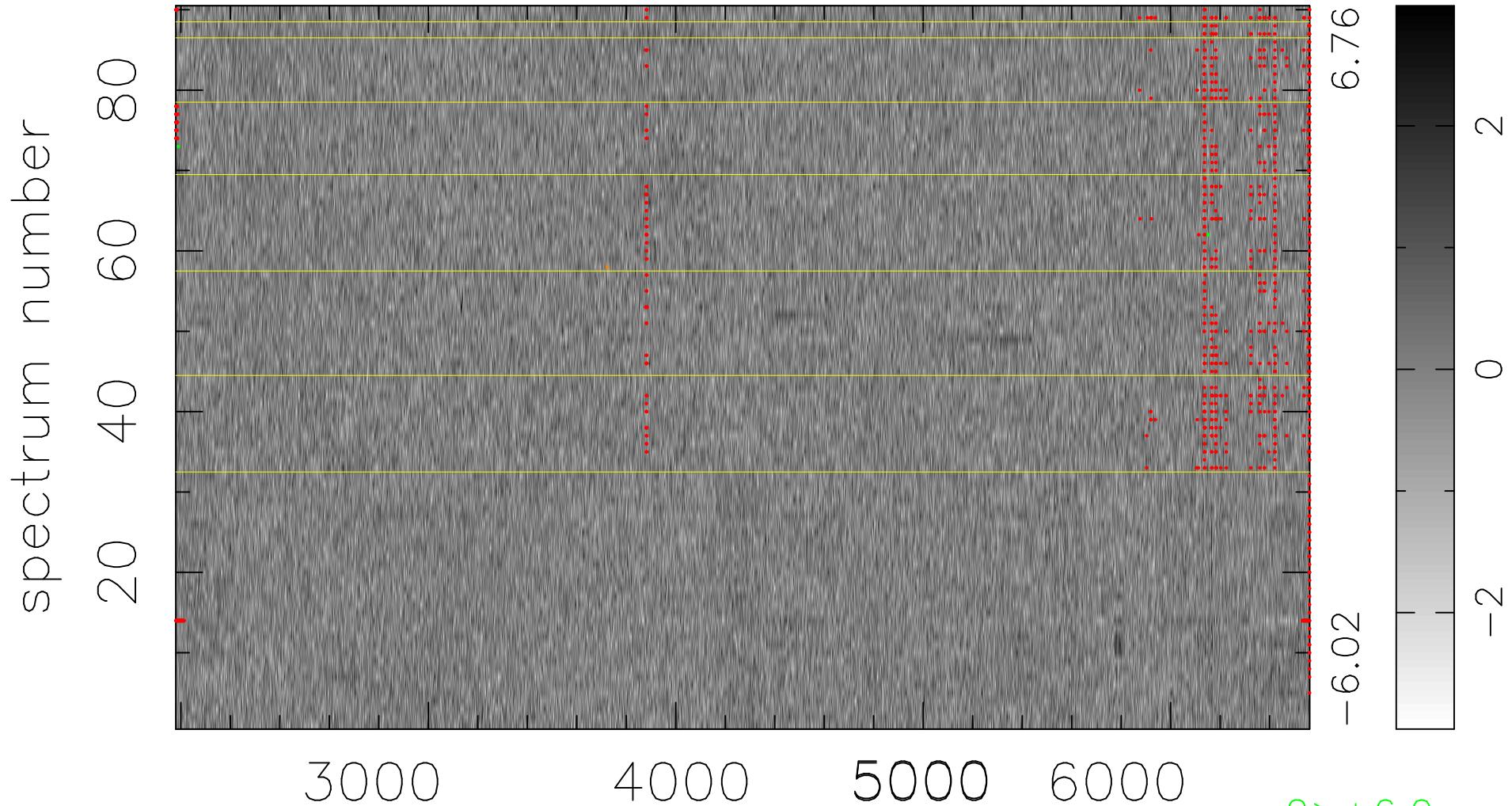


$$\chi(\lambda, t) = ( \text{Data} - \text{Model } \text{AC}_5\text{B}_4\text{F} ) / \sigma \chi$$

$$\chi^2 / (412470 - 5238) = 0.896 \Rightarrow 1.004$$

4583x90



bad:967=0.23%

$\lambda$  (Å)  $z = 0.43997$

2 > +6.0 $\sigma$

1 < -6.0 $\sigma$