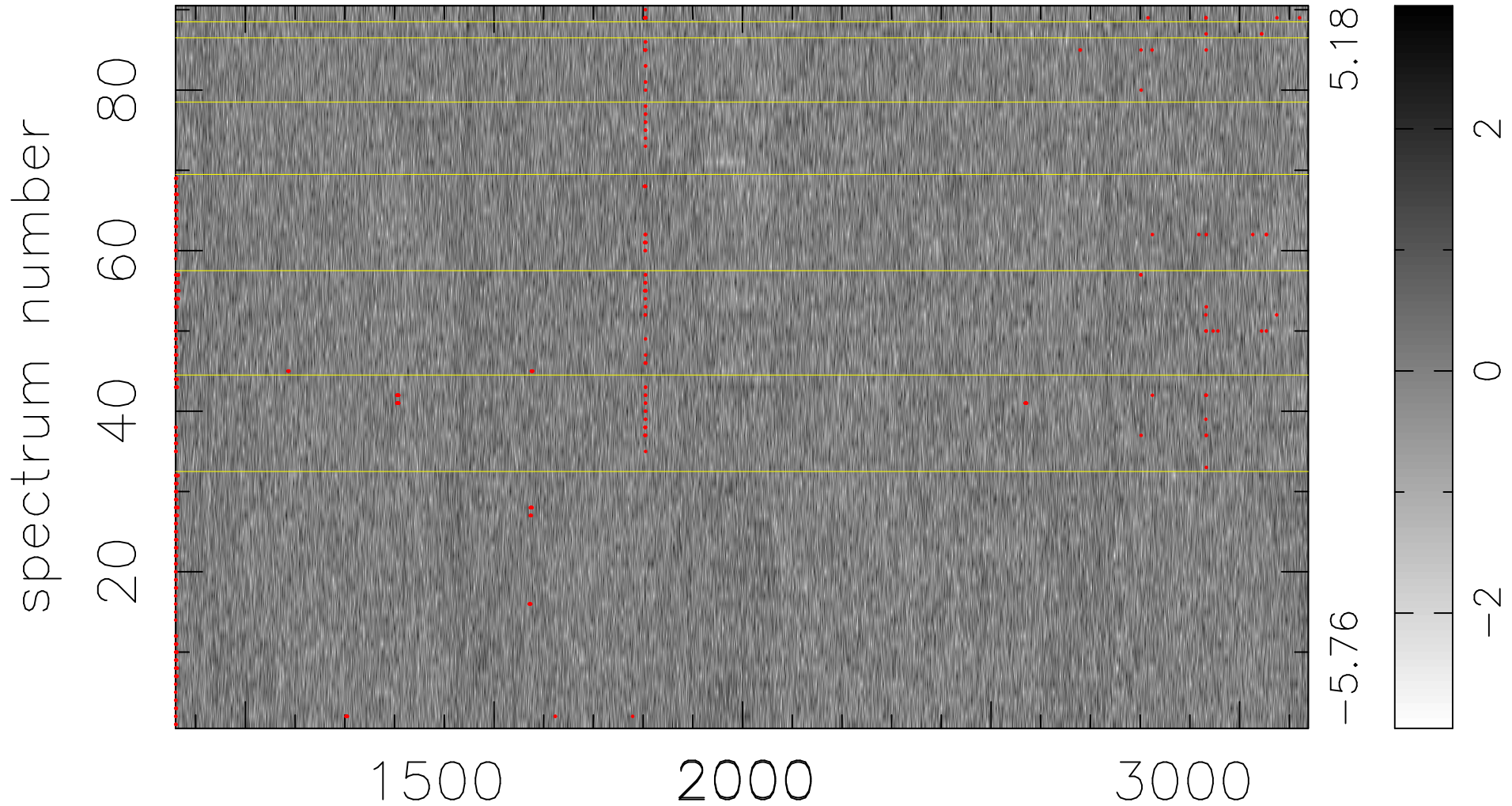


$$\chi(\lambda, t) = ( \text{Data} - \text{Model } \text{AC}_5\text{B}_7\text{F} ) / \sigma \chi$$

$$\chi^2 / (410220 - 5488) = 0.900 \Rightarrow 1.009$$

4558x90



bad:478=0.12%     $\lambda$  (Å)     $z = 2.05901$