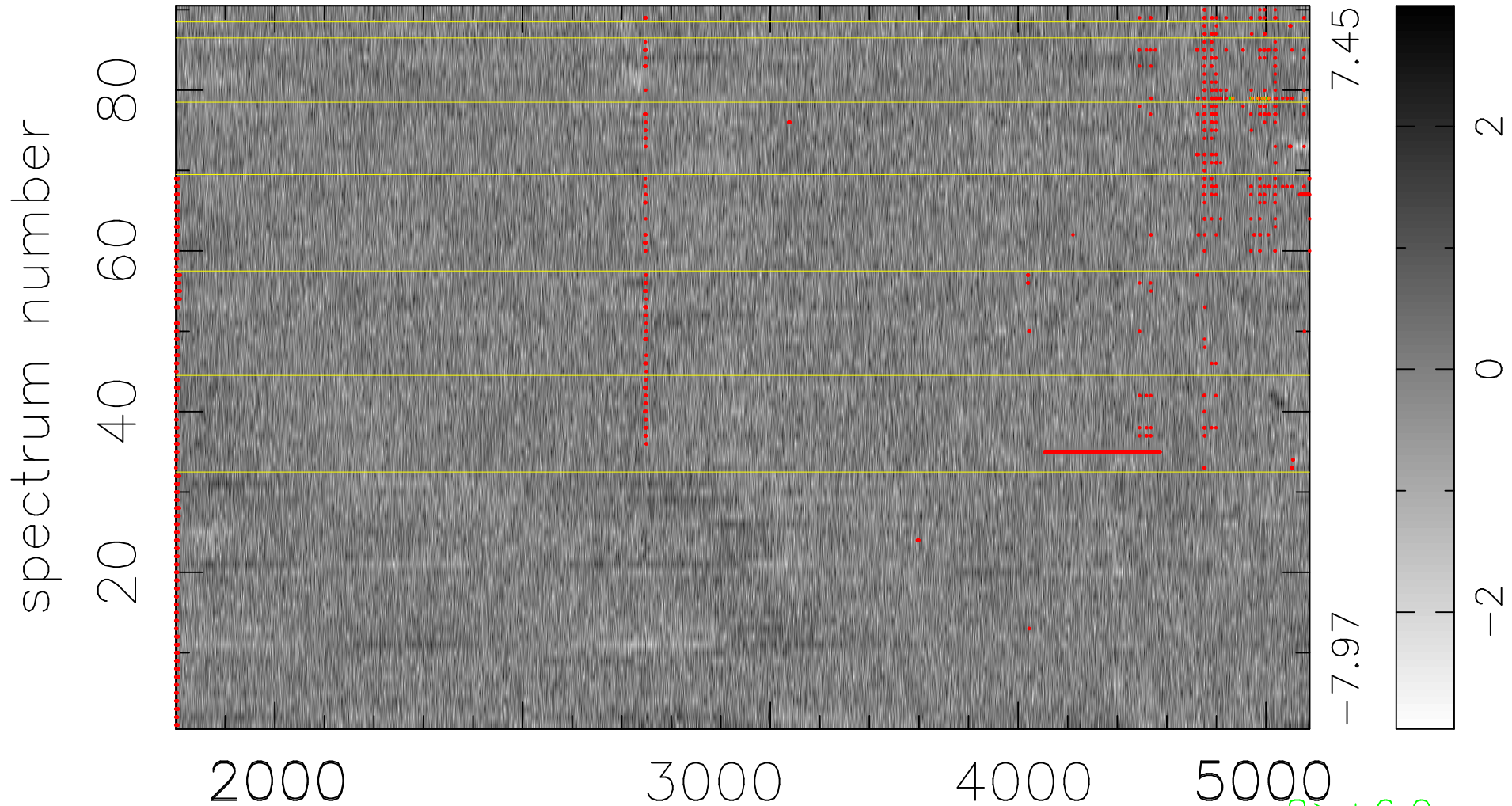


$$\chi(\lambda,t) = (\text{Data} - \text{Model } AC_5) / \sigma \chi$$

$$\chi^2 / (411930 - 4947) = 0.972 \Rightarrow 1.007$$

4577x90



7.45

-7.97

2

0

-2

8 > +6.0σ

12 < -6.0σ

bad:1752=0.43% λ (Å) z = 0.98088