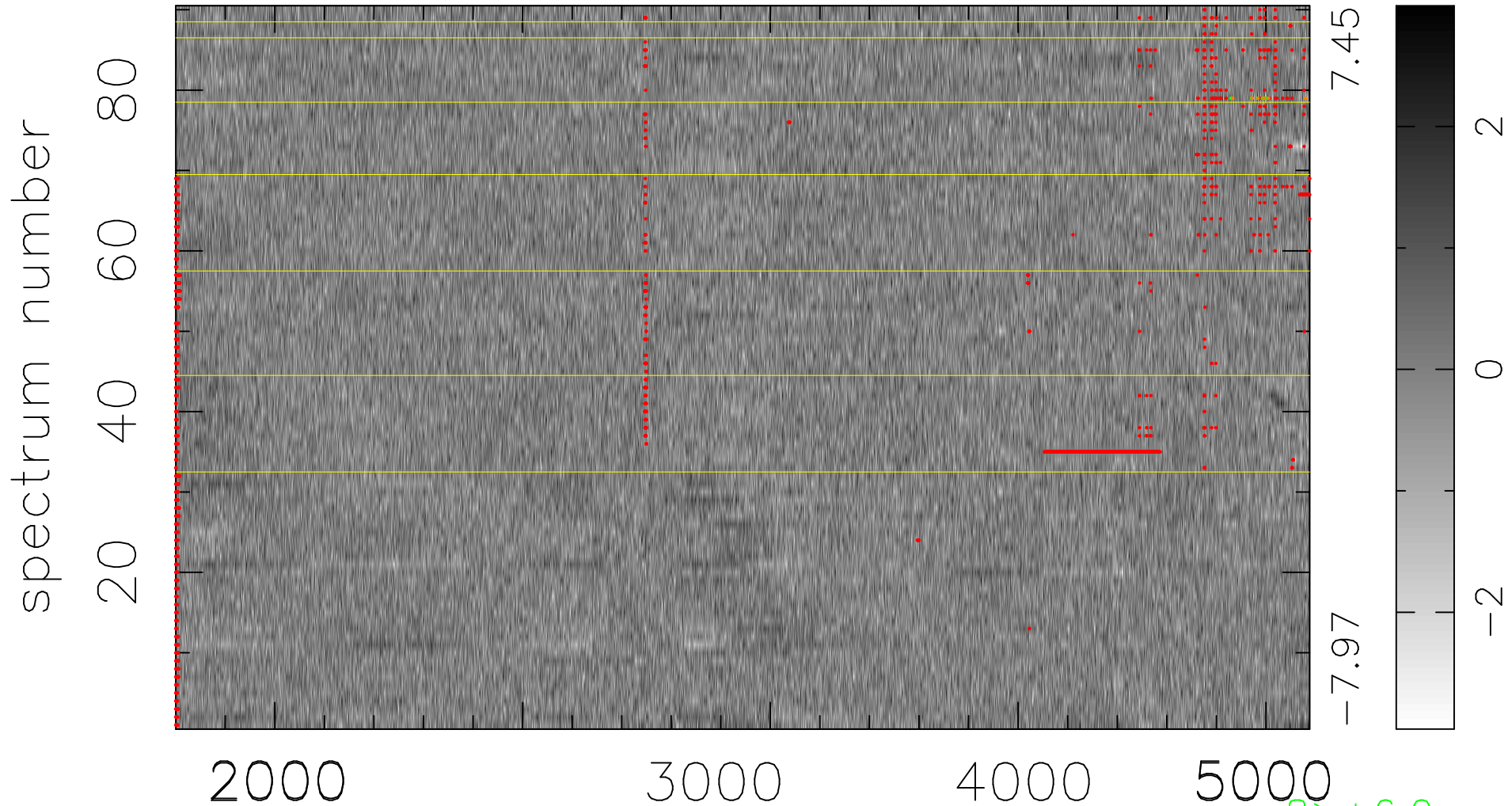


$$\chi(\lambda, t) = (\text{Data} - \text{Model } \text{AC}_5\text{B}_4\text{F}) / \sigma \chi$$

$$\chi^2 / (411930 - 5143) = 0.968 \Rightarrow 1.007$$

4577x90



bad:1752=0.43% λ (Å) $z = 0.98088$

8 > +6.0σ
12 < -6.0σ