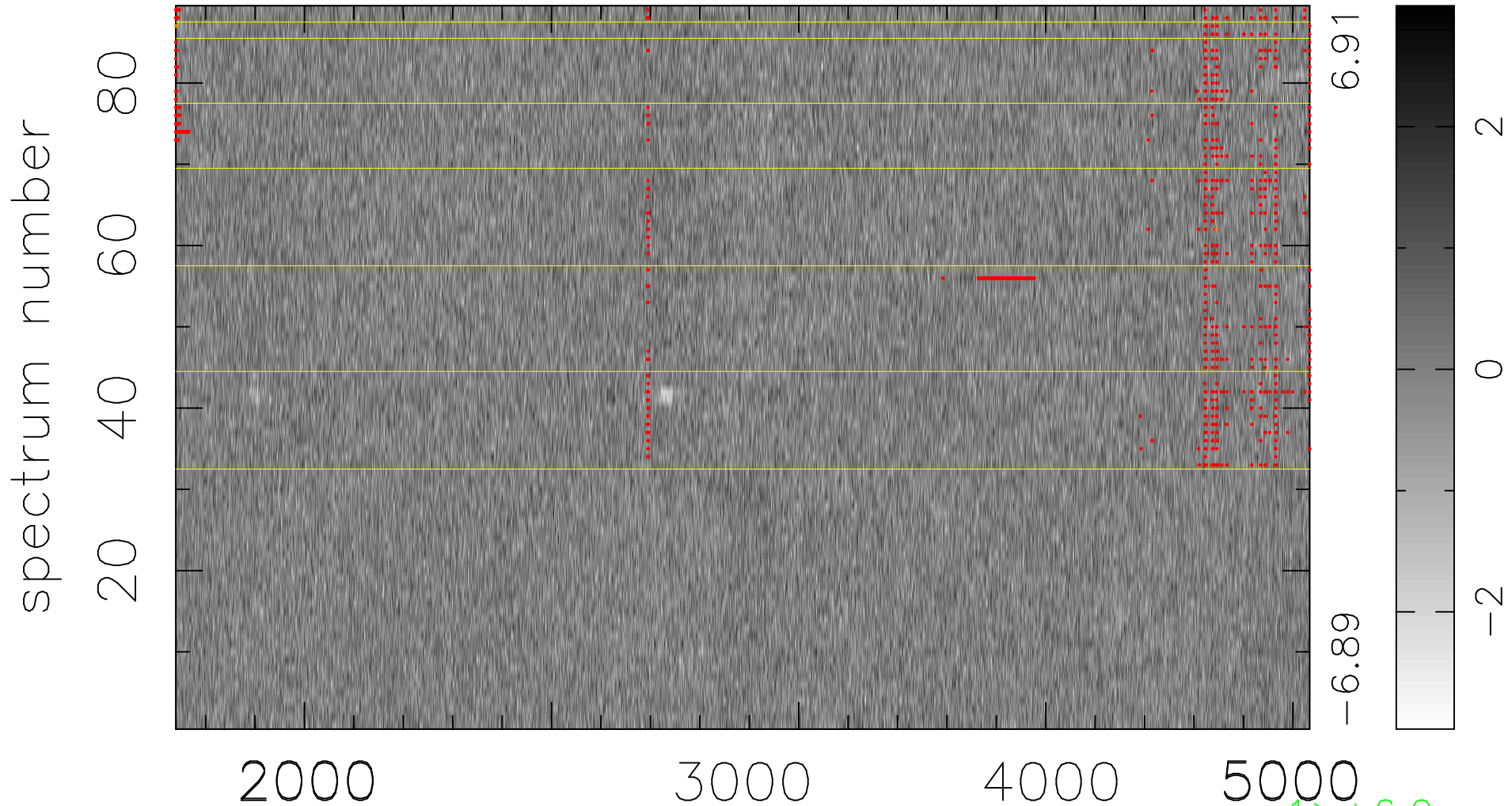


$$\chi(\lambda,t) = ( \text{Data} - \text{Model } AC_5 ) / \sigma \chi$$

$$\chi^2 / (408421 - 4968) = 0.901 \Rightarrow 1.007$$

4589 × 89



bad:1030=0.25%  $\lambda$  (Å)  $z = 1.02977$

1 > +6.0σ

4 < -6.0σ