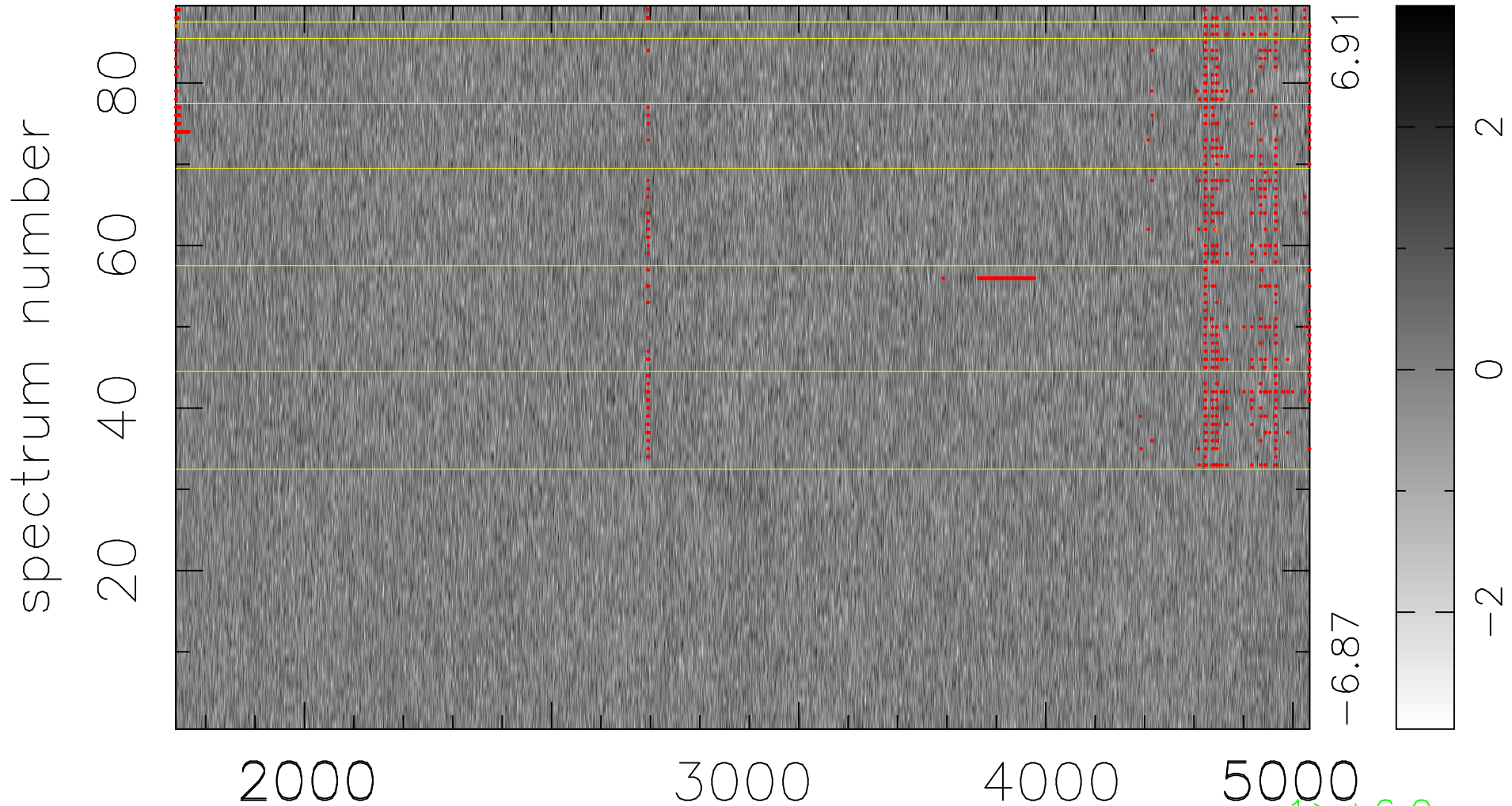


$$\chi(\lambda, t) = ( \text{Data} - \text{Model } \text{AC}_5\text{B}_4\text{F} ) / \sigma \chi$$

$$\chi^2 / (408421 - 5242) = 0.899 \Rightarrow 1.008$$

4589 × 89



bad:1030=0.25%  $\lambda$  (Å)  $z = 1.02977$

1 > +6.0σ

4 < -6.0σ